



Pennsylvania Railroad Technical & Historical Society  
Lewistown Archives

ICC Valuation Map Index  
State of New York

PRRT&HS map reproduction prices as of February 2016:  
\$6.00 each

Maps are available as downloadable image files (jpg or pdf) or as printed maps. Orders for printed maps will take longer to complete and a shipping & handling fee will be added. The Lewistown Archives is open 1 week a month and manned by volunteers.

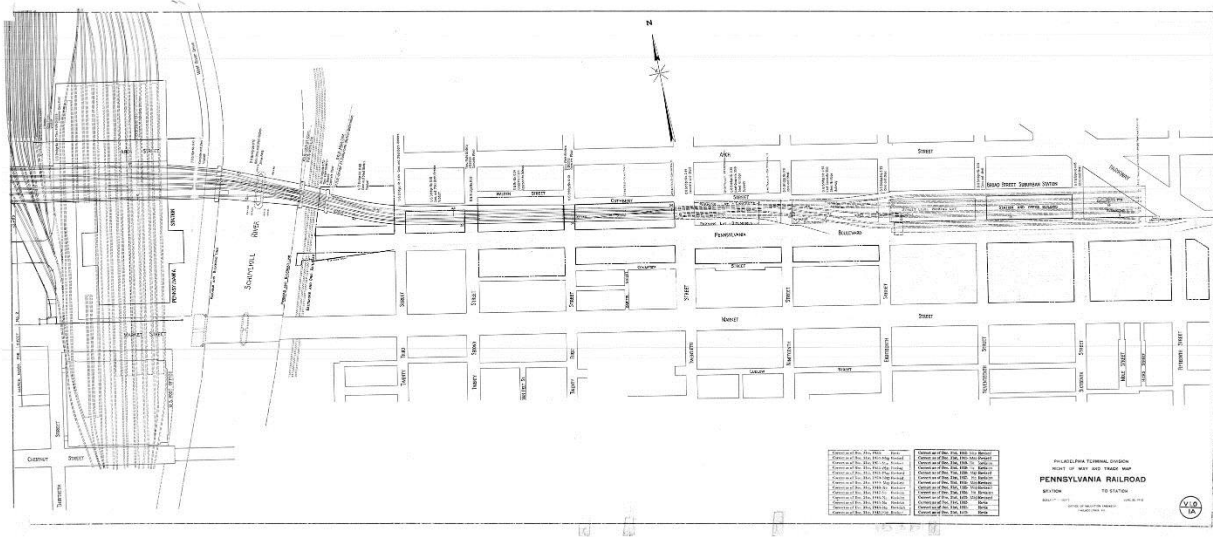
This pdf can be searched for railroad names and locations using the PDF Find command under the Acrobat Reader Edit Menu or press (ctrl or cmd “F”). Holding down the shift key opens the Advanced Search window instead.

Original valuation maps are approximately 24” x 56” and usually cover 1 mile of railroad right of way (1” = 100’). Most were first drawn between 1915 and 1918. Last revision and “correct to” dates are shown when indicated on the map sheet.

Valuation section numbers change at the division or state line. Division names are usually from the time of the map’s creation. Branches have subsection numbers or are included in regular sheet numbering. The index is sorted by railroad owner/operator and then by railroad name, state and valuation number at the time of creation. In some cases, this information was revised, changed or additional sheets added at a later date.

Property lines are included on most sheets, unless a separate land sheet was issued – usually designated by an “L” or “SL” in the sheet number. Schedules of property are often redacted from revisions after about 1930.

Pennsylvania Railroad Valuation Section 1 Sheet 1A –Broad Street Suburban & 30<sup>th</sup> St. Stations 1954



Partial support for this index provided by a grant from the R&LHS

Produced by Stephen Titchenal, [www.railsandtrails.com](http://www.railsandtrails.com) for the PRRT&HS

**Erie**

State	NY			
sheet #	revised	correct to	Railroad Location	
<b>VS# 8A</b>			<b>Susquehanna Div ML (Erie)</b>	
3	1947	1947		
4	1946	1946		
5	1947	1947		
6	1946	1946		
7	1946	1946		
8	1946	1946		
9	1946	1946	Horseheads	

**Lehigh Valley Railway**

State	NY			
sheet #	revised	correct to	Railroad Location	
<b>VS# 22</b>			<b>ML, Rochester Branch, Lehigh &amp; Lake Erie Branch, Niagara</b>	
35	1963	1963	Pittsburg & Lehigh Jct. [PRR	

**Pennsylvania Railroad**

State	NY			
sheet #	revised	correct to	Railroad Location	
<b>VS# 28.01</b>			<b>37th St. Yard, NYC</b>	
1	1920	1921		
1	1924	1926		
1	1947	1949		
1	1947	1949		
<b>VS# 28.02</b>			<b>Piers on Hudson River in NYC</b>	
1	1918	1921		
1	1933	1948		
2	1941	1949		
<b>VS# 28.03</b>			<b>Williamsburg Yard, Brooklyn NY</b>	
1	1918	1921	Brooklyn NY	
1	1943	1949	Brooklyn NY	
<b>VS# 28.04</b>			<b>Pier &amp; Freight Station - Washington Ave, Brooklyn NY</b>	
1	1941	1948	Washington Ave, Brooklyn	
<b>VS# 28.05</b>			<b>Dock &amp; Freight Station - 125th St. NYC</b>	
1	1918	1924		
1	1945	1948	125th St. NYC	
<b>VS# 28.06</b>			<b>Miscellaneous Property in NYC</b>	
1	1918	1925		
1	1927	1948	NYC	
	1918	1918		

2 1945 1948 NYC

**Pittsburgh, Shawmut & Northern**

State	NY			
sheet #	revised	correct to	Railroad Location	
<b>VS# 2a</b>			<b>PS&amp;N Branch Line to Olean</b>	
4		1919	Weston	
4		1945	Olean	
5		1919	Olean	
5 L		1919	Olean	
5 L		1919	Olean	
5 L		1919	Olean	
5		1933	Olean	
5		1933	Olean	
5 STL		1933	Olean	

**Glendale & East River Railroad Co.**

State	NY			
sheet #	revised	correct to	Railroad Location	
			<b>Long Island Railroad</b>	

**VS# 61 Glendale & East River RR (NY, B&MB Ry - LI)**

1 L	1916	1916		
2 L	1916	1916	South Side Crossing	
3 L	1916	1916		
3 L	1943	1951		

**New York, Brooklyn & Manhattan Beach**

State	NY			
sheet #	revised	correct to	Railroad Location	
			<b>Long Island Railroad</b>	

**VS# 6 Fresh Pond Jct. to Bay Ridge**

1 L	1916	1916	Fresh Pond Junction	
1 L	1916	1916	Fresh Pond Junction	
2 L	1916	1916		
3	1916	1916		
3 L	1916	1916		
4 L	1916	1916		
5 L	1916	1916		
7	1916	1916	East New York	
8	1916	1916	East New York Yard	
8 L	1916	1916		
9	1916	1916	New Lots Yard	
9 L	1916	1916		
10	1916	1916	New Lots Yard	
10 L	1916	1916		
11	1916	1916	Rockaway Ave. Yard	
11	1924	1924	Rockaway Ave. Yard	

PRRT&HS - State of New York Valuation Maps

11	1924	1924	Rockaway Ave. Yard
11	1957	1957	Rockaway Ave. Yard
11	1957	1957	Rockaway Ave. Yard
11 L	1916	1916	
12	1916	1916	
12 L	1916	1916	
13	1916	1916	Rugby
13 L	1916	1916	
14	1916	1916	
14 L	1916	1916	
15	1916	1916	Kowenhoven
15 L	1916	1916	
16	1916	1916	
16 L	1916	1916	
17	1916	1916	
17 L	1916	1916	
18	1916	1916	Vanderveer Park
18 L	1916	1916	
23 L	1916	1916	
24 L	1916	1916	
25	1916	1916	Bath Jct. Yard
25 L	1916	1916	
26	1916	1916	
26 L	1916	1916	
27	1916	1916	
27 L	1916	1916	
28	1916	1916	
28	1942	1944	
28	1942	1944	
28 L	1916	1916	
29	1916	1916	
29	1919	1919	
29	1945	1951	
29	1945	1951	
29	1945	1951	
29 L	1916	1916	
30	1949	1949	
30 L	1916	1916	
30 A	1927	1927	Bay Ridge Team Yard
31	1949	1951	
31 L	1916	1916	
<b>VS# 6A</b>	<b>Evergreen Branch (NY,B&amp;MB Ry - LI)</b>		
32	1916	1916	
32 L	1916	1916	
33	1916	1916	
	1916	1916	

35	1916	1916	
36	1916	1916	South Side Crossing
36 L	1916	1916	South Side Crossing
<b>VS# 6B</b>	<b>Manhattan Beach Branch</b>		
46 L	1927	1949	
46 A L	1940	1949	

**Elmira & Lake Ontario**

**Pennsylvania Railroad**

State	NY			
sheet #	revised	correct to	Railroad Location	

**VS# 1 Elmira & Lake Ontario**

1		1918	Chemung Junction
1		1920	Chemung Junction
1	1949	1949	Chemung Junction
1 a		1916	Southport Yard t3
1 A		1922	Southport Yard
1 A SL		1923	
1 A SL	1949	1949	Southport Yard
1 a st	1918	1923	Southport Yard
1 a st	1918	1926	Southport Yard
1 a st	1918	1927	
1 a st	1918	1944	Southport Yard
1 A ST	1947	1949	Southport Yard
1 B		1929	
1 B	1946	1949	Elmira
1 C		1920	Elmira Freight Yard
1 c	1918	1920	Elmira Freight Yard
1 c	1918	1927	Elmira Freight Yard
1 C	1945	1949	Elmira
2		1924	Horseheads
2	1949	1949	Horseheads
3	1934	1949	
4	1918	1949	
5	1942	1949	
6		1924	Pine Valley
6	1943	1949	Pine Valley
7		1928	
7	1940	1949	
8	1906	1906	
8	1943	1949	
9		1929	Millport
9	1948	1949	Millport
10		1929	
10	1938	1949	
11		1924	
11	1949	1949	

*PRRT&HS - State of New York Valuation Maps*

<b>12</b>	1949	1949		<b>44</b>	1930	1949	
<b>13</b>	1944	1949		<b>45</b>	1949	1949	Benton
<b>14</b>	1949	1949		<b>46</b>		1926	Bellona
<b>15</b>		1918	Montour Falls	<b>46</b>	1948	1949	Bellona
<b>15</b>	1949	1949	Montour Falls	<b>47</b>		1926	
<b>16</b>		1925		<b>47</b>	1935	1949	
<b>16</b>	1949	1949		<b>48</b>	1918	1949	
<b>17</b>		1920		<b>49</b>	1918	1949	
<b>17</b>	1948	1949		<b>50</b>		1922	Hall
<b>18</b>		1924	Watkins	<b>50</b>	1945	1949	Hall
<b>18</b>	1948	1949	Watkins Glen	<b>51</b>	1946	1949	
<b>19</b>		1924		<b>52</b>		1927	
<b>19</b>	1939	1949		<b>52</b>	1934	1949	
<b>20</b>		1927		<b>53</b>		1949	Stanley
<b>20</b>	1939	1949		<b>53</b>	1946	1949	Stanley
<b>21</b>	1940	1949		<b>54</b>	1946	1949	
<b>22</b>	1938	1949		<b>55</b>	1934	1949	
<b>23</b>	1937	1949		<b>56</b>	1918	1949	
<b>24</b>		1923	Rock Stream	<b>57</b>		1926	Aloquin (Lewis)
<b>24</b>	1945	1949	Rock Stream	<b>57</b>	1945	1949	Aloquin (LePL_R024-Wis)
<b>25</b>	1944	1949		<b>58</b>		1926	Ennerdale
<b>26</b>		1924	Glendora	<b>58</b>	1943	1949	Ennerdale
<b>26</b>	1943	1949		<b>59</b>	1939	1949	
<b>27</b>	1946	1949	Lakemont	<b>60</b>	1924	1949	
<b>28</b>	1937	1949		<b>61</b>	1918	1949	
<b>29</b>		1924	Starkey	<b>62</b>	1945	1949	
<b>29</b>	1943	1949	Starkey	<b>63</b>		1925	
<b>30</b>		1922		<b>63</b>	1946	1949	
<b>30</b>	1946	1949		<b>64</b>		1921	
<b>31</b>	1946	1949		<b>64</b>	1948	1949	
<b>32</b>	1941	1949		<b>65</b>		1923	Canandaigua
<b>33</b>		1920	Himrod	<b>65</b>	1944	1949	Canandaigua
<b>33</b>	1944	1949	Himrod	<b>66</b>		1923	Stanley
<b>34</b>	1934	1949		<b>66</b>	1942	1949	Stanley
<b>35</b>	1945	1949		<b>67</b>		1924	
<b>36</b>		1923	Milo	<b>67</b>	1941	1949	
<b>36</b>	1936	1949	Milo Div	<b>68</b>	1944	1949	Flint
<b>37</b>		1920	Milo	<b>69</b>	1925	1949	
<b>37</b>	1937	1949	Milo	<b>70</b>		1921	Seneca Castle
<b>38</b>	1937	1949		<b>70</b>	1949	1949	Seneca Castle
<b>39</b>	1918	1949		<b>71</b>	1920	1949	
<b>40</b>	1948	1949		<b>72</b>		1919	Orleans
<b>41</b>		1922	Penn Yan	<b>72</b>	1949	1949	Orleans
<b>41</b>	1948	1949	Penn Yan	<b>73</b>	1918	1949	
<b>42</b>		1921		<b>74</b>	1918	1949	
<b>42</b>	1935	1949		<b>75</b>	1931	1949	
<b>43</b>	1918	1949		<b>76</b>	1947	1949	Phelps Jct.

77	1932	1949	
78	1918	1949	
79	1918	1949	
80		1927	
80	1939	1949	
81	1929	1949	
82		1919	Newark
82	1941	1949	Newark
83		1920	
83	1944	1949	
84		1925	
84	1943	1949	
85		1924	
85	1949	1949	
86		1924	
86	1927	1949	
87		1927	Fairville
87	1941	1949	Fairville
88	1934	1949	Swamp Gravel Pit
89	1932	1949	
90	1942	1949	Zurich
91	1918	1949	
92		1925	
92	1918	1949	
93	1918	1949	
94		1925	Sodus Center
94	1944	1949	Sodus Center
95		1922	Wallington
95	1944	1949	Wallington
96	1944	1949	
97		1928	
97	1943	1949	
98		1926	
98	1945	1949	
98	1945	1949	
99	1949	1949	Sodus Point
99	1949	1949	Sodus Point
100		1926	Sodus Bay
100	1944	1949	
101		1921	
101	1937	1949	
102		1918	
102	1937	1949	
<b>VS# 1.NY</b>	<b>Elmira &amp; Lake Ontario</b>		
	1918	1918	

<b>VS# 2</b>	<b>Elmira &amp; Lake Ontario Marion Branch</b>		
1	1931	1949	
2	1931	1949	
3	1931	1949	
4	1944	1949	
5	1944	1949	
6	1931	1949	
7	1931	1949	
8	1945	1949	
9	1947	1949	Marion

**Elmira & Williamsport**  
**Pennsylvania Railroad**

<b>State</b>	<b>NY</b>		
sheet #	revised	correct to	Railroad Location

<b>VS# 2</b>	<b>Elmira &amp; Williamsport RR (NY) ML</b>		
1		1918	
1	1918	1949	
2	1918	1949	
3		1918	
3	1918	1949	
4	1918	1949	
5		1923	State Line Junction
5	1918	1949	State Line Junction
6		1923	Southport Yard
6	1918	1949	Southport Yard
7		1922	Elmira
7	1946	1949	Elmira
7	1946	1949	Elmira

<b>VS# 1</b>	<b>Elmira &amp; Williamsport RR (PA) ML</b>		
0	1916	1916	

**Jamestown, Westfield & Northwestern**  
**Pennsylvania Railroad**

<b>State</b>	<b>NY</b>		
sheet #	revised	correct to	Railroad Location

<b>VS# 1.0</b>	<b>Jamestown, Westfield &amp;</b>		
1	1917	1925	Mayville
1	1917	1925	Mayville
2	1917	1925	Chautauqua
2	1917	1925	Chautauqua

**Pennsylvania Tunnel & Terminal Railroad**  
**Pennsylvania Railroad**

State	NY			
sheet #	revised	correct to	Railroad Location	

**VS# 2.0 ML in New York City (PT&T)**

1	1948	1949		
1 SL	1918	1918		
1 SL	1918	1918		
1 SL	1918	1918		
1 SL	1946	1949		
1 A	1925	1949		
1 A SL	1918	1918		
2	1949	1949	Tower 'F', Tower 'Q'	
2 SL	1926	1948		
2 SL	1931	1949		
3	1949	1949	Hunters Point Ave.	
3 SL	1918	1918		
3 SL	1918	1918		
3 SL	1918	1919		
3 SL	1946	1949		
4	1918	1919		
4	1948	1949		
5 SL	1927	1927		
5 SL	1944	1949		
5 ST	1948	1949	Pennsylvania Station	
5 1 SL	1918	1918		
5 2 SL	1918	1918		
5 3 SL	1918	1918		
5 4 SL	1918	1918		
6	1943	1949		
6	1943	1949		
6	1943	1949		

**United New Jersey Railroad & Canal Company**

**Pennsylvania Railroad**

State	NY			
sheet #	revised	correct to	Railroad Location	

**VS# 4.01 Ferry Terminals in New York City (UNJ&C)**

1	1918	1925		
1	1943	1949		
2	1918	1926		
2	1944	1949		
3	1918	1921	Battery Park	
3	1925	1949		

**Pennsylvania Railroad**

State	NY			
sheet #	revised	correct to	Railroad Location	

**VS# Isolated Property in Buffalo**

2	1918	1926		
2	1918	1926	Buffalo Harbor	

**Western New York & Pennsylvania**

**Pennsylvania Railroad**

State	NY			
sheet #	revised	correct to	Railroad Location	

**VS# 2.1 WNY&P Buffalo Div ML**

1	1918	1918		
1	1918	1926		
1	1932	1949		
1	1932	1949		
2	1918	1918	Elma, Jamison Road	
2	1947	1949	Jamison Road, Elma	
2	1947	1949	Elma, Jamison Road	
3	1918	1918		
3	1938	1949		
3	1938	1949		
4	1918	1918	East Aurora	
4	1946	1949	East Aurora	
4	1946	1949	East Aurora	
5	1918	1918	Blakeley	
5	1949	1949	Blakeley	
5	1949	1949	Blakeley	
6	1918	1918	South Wales	
6	1949	1949	South Wales	
6	1949	1949	South Wales	
7	1918	1928		
7	1948	1949		
7	1948	1949		
8	1918	1918	Holland	
8	1945	1949	Holland	
8	1945	1949	Holland	
9	1918	1924		
9	1942	1949		
9	1958	1962		
10	1918	1922	Protection	
10	1948	1949	Protection	
10	1956	1957	Protection	
11	1918	1921	Yorkshire	
11	1940	1949		
12	1918	1926	Chaffee	
12	1944	1949		
13	1918	1918	Arcade	
13	1947	1949	Arcade	
13	1944	1950	Arcade	

PRRT&HS - State of New York Valuation Maps

14	1918	1919	
14	1942	1949	
15	1918	1926	Delevan
15	1949	1949	Delevan
15	1958	1962	Vandalia
16	1917	1917	
16	1943	1949	
16	1954	1954	Protection
17	1918	1919	Lime Lake, Machias
17	1946	1948	Machias, Lime Lake
17	1946	1949	Machias, Lime Lake
18	1918	1918	
18	1929	1929	
18	1943	1949	
18	1951	1951	Protection
19	1918	1920	
19	1939	1949	
20	1918	1921	Franklinville
20	1948	1949	Franklinville
20	1948	1957	Franklinville
21	1918	1919	
21	1929	1949	
21	1929	1949	
22	1918	1919	Cadiz
22	1949	1949	Cadiz
22	1949	1949	Cadiz
23	1918	1921	
23	1947	1949	
23	1947	1949	
24	1918	1919	Ischua
24	1947	1949	Ischua
24	1947	1949	Ischua
24	1947	1949	Ischua
25	1918	1927	
25	1929	1949	
25	1929	1949	
26	1918	1919	
26	1929	1949	Ischua
26	1929	1949	
27	1918	1918	
27	1947	1949	
27	1947	1949	
28	1946	1949	Weston
28	1946	1956	Weston
29	1918	1918	Portville
29	1946	1949	Portville
30	1918	1918	

30	1939	1949	
31	1918	1918	PA State Line
31	1929	1949	
31	1929	1957	
VS# 2.2		WNY&P ML	
1	1918	1919	Onoville
1	1944	1949	Onoville
2	1945	1949	
3	1942	1949	Wolf Run
4	1918	1926	Quaker Bridge
4	1935	1949	Quaker Bridge
5	1918	1926	Cold Spring
5	1942	1949	Cold Spring
6	1918	1920	
6	1945	1949	
7	1918	1921	Red House
7	1942	1949	Red House
8	1934	1949	Shongo
9	1918	1924	
9	1931	1949	
10	1942	1942	Salamanca
10	1943	1949	Salamanca
11	1918	1919	
11	1942	1949	
12	1942	1949	
12	1958	1962	
13	1919	1926	Carrollton
13	1944	1949	Carrollton
14	1918	1918	Riverside Jct
14	1946	1949	Riverside Jct.
15	1942	1942	Vandalia
15	1943	1949	Vandalia
16	1918	1921	Russell
16	1934	1949	Russell
17	1944	1949	Moritz
18	1918	1926	Allegheny
18	1932	1949	Allegheny
VS# 2.3		WNY&P ML	
1	1918	1918	Winchester
1	1948	1949	
1	1938	1950	
2	1918	1918	Winchester
2	1948	1949	Winchester
2	1948	1949	Winchester
3	1919	1919	
3	1941	1942	

PRRT&HS - State of New York Valuation Maps

3	1948	1949	
4	1918	1918	Ebenezer
4	1927	1927	Ebenezer
4	1942	1942	Ebenezer
4	1949	1949	Ebenezer
5	1948	1949	
5	1948	1949	
6	1948	1949	
6	1958	1962	
7	1918	1919	Spring Brook
7	1947	1949	Spring Brook
7	1958	1958	Spring Brook

**VS# 2.4 WNY&P (Union Terminal RR v1)**

1	1918	1918	
1	1918	1918	
1	1919	1923	
1	1948	1948	
1	1948	1948	
1	1948	1949	
2	1920	1920	
2	1921	1921	
2	1923	1923	
2	1923	1927	
2	1948	1948	
2	1949	1949	
3	1947	1949	
3	1947	1949	
4	1923	1923	
4	1947	1948	
4	1947	1948	
4	1947	1949	
5	1918	1918	
5	1949	1949	
5	1958	1959	

**VS# 2.11 WNY&P Olean Branch**

1 SL	1938	1949	
1 ST	1918	1918	
1 ST	1938	1949	
1 ST	1938	1949	

**VS# 2.12 WNY&P Rochester Branch**

1	1919	1923	Rochester
1	1949	1949	Rochester
1	1949	1950	Rochester
2	1918	1922	
2	1942	1949	
2	1942	1949	

3	1918	1921	
3	1934	1949	
3	1963	1963	
3	1963	1963	
4	1918	1919	
4	1942	1949	
4	1958	1958	
4	1958	1958	
5	1939	1949	
6	1918	1919	Genesee Junction
6	1949	1949	Genesee Junction
7	1926	1949	
8	1924	1924	Whites
8	1940	1949	
9	1937	1949	
10	1918	1920	Severance
10	1935	1949	Severance
11	1920	1927	
11	1934	1949	
12	1918	1949	
13	1942	1949	Scottsville
13	1957	1962	Scottsville
14	1929	1949	
15	1918	1919	Wadsworth Junction
15	1943	1949	Wadsworth Junction
16	1918	1918	Honeoye Junction
16	1927	1949	Honeoye Junction
17	1929	1949	
18	1918	1949	
19	1918	1949	
20	1918	1921	Canawagus
20	1941	1949	Canawagus
21	1918	1919	
21	1935	1949	
22	1918	1925	
22	1926	1949	
23	1918	1927	
23	1918	1949	Lock 5
24	1918	1919	Fowlerville
24	1943	1949	Fowlerville
25	1943	1949	
26	1918	1926	
26	1942	1949	
27	1925	1925	York
27	1937	1949	York
28	1918	1927	
28	1929	1949	



*PRRT&HS - State of New York Valuation Maps*

<b>29</b>	1943	1949	Retsof Junction	<b>55</b>	1918	1918	
<b>30</b>	1922	1924	Piffard	<b>55</b>	1928	1949	
<b>30</b>	1940	1949	Piffard	<b>56</b>	1918	1926	
<b>31</b>	1934	1949		<b>56</b>	1942	1949	
<b>32</b>	1918	1919		<b>57</b>	1918	1926	Letchworth Park
<b>32</b>	1937	1949		<b>57</b>	1928	1949	Letchworth Park
<b>33</b>	1920	1920	Cuylerville, Sterling	<b>58</b>	1918	1923	Portageville
<b>33</b>	1940	1949	Sterling, Cuylerville	<b>58</b>	1942	1949	Portageville
<b>34</b>	1924	1924	Cuylerville	<b>59</b>	1918	1919	Bluestone
<b>34</b>	1940	1949	Cuylerville	<b>59</b>	1943	1949	Blue Stone
<b>35</b>	1918	1926		<b>60</b>	1918	1919	
<b>35</b>	1927	1949		<b>60</b>	1927	1949	
<b>36</b>	1922	1922	DL&W Junction	<b>61</b>	1918	1924	
<b>36</b>	1949	1949	DL&W Junction	<b>61</b>	1942	1949	
<b>37</b>	1918	1924	Mount Morris	<b>62</b>	1918	1927	
<b>37</b>	1945	1949	Mt. Morris	<b>62</b>	1934	1949	
<b>38</b>	1918	1918		<b>63</b>	1929	1949	
<b>38</b>	1945	1949		<b>64</b>	1919	1924	Roszburg
<b>39</b>	1918	1927		<b>64</b>	1946	1949	Roszburg
<b>39</b>	1937	1949		<b>65</b>	1924	1949	
<b>40</b>	1935	1949		<b>66</b>	1920	1949	
<b>41</b>	1927	1927	Sonyea	<b>67</b>	1918	1949	
<b>41</b>	1943	1949	Sonyea	<b>68</b>	1918	1919	Fillmore
<b>42</b>	1925	1949		<b>68</b>	1942	1949	Fillmore
<b>43</b>	1925	1949		<b>69</b>	1928	1949	
<b>44</b>	1925	1927	Fishers Water	<b>70</b>	1939	1949	
<b>44</b>	1929	1948	Fishers Water Station	<b>71</b>	1918	1949	
<b>45</b>	1918	1921		<b>72</b>	1942	1949	Houghton
<b>45</b>	1942	1949		<b>73</b>	1918	1924	
<b>46</b>	1918	1925	Tuscarora	<b>73</b>	1929	1949	
<b>46</b>	1947	1949	Tuscarora	<b>74</b>	1937	1949	
<b>47</b>	1919	1949		<b>75</b>	1918	1919	Caneadea
<b>47 A</b>	1918	1949		<b>75</b>	1934	1949	Caneadea
<b>48</b>	1926	1926		<b>76</b>	1918	1919	
<b>48</b>	1942	1949		<b>76</b>	1939	1949	
<b>49</b>	1927	1927	Nunda Junction	<b>77</b>	1918	1919	Oramel
<b>49</b>	1934	1949	Nunda Junction	<b>77</b>	1941	1949	Oramel
<b>50</b>	1946	1949		<b>77</b>	1941	1949	Oramel
<b>51</b>	1918	1918	West Nunda	<b>78</b>	1918	1920	
<b>51</b>	1930	1949		<b>78</b>	1923	1949	
<b>51 A</b>	1946	1949		<b>79</b>	1918	1922	
<b>52</b>	1918	1926	Oakland	<b>79</b>	1948	1949	Belfast
<b>52</b>	1946	1949		<b>80</b>	1934	1949	
<b>53</b>	1918	1926		<b>81</b>	1942	1949	
<b>53</b>	1945	1949		<b>82</b>	1942	1949	
<b>54</b>	1918	1920	Lewis	<b>83</b>	1918	1920	Rockville
<b>54</b>	1945	1949	Lewis	<b>83</b>	1949	1949	Rockville

PRRT&HS - State of New York Valuation Maps

84	1942	1949	
85	1918	1949	
86	1925	1949	
87	1918	1918	Black Creek
87	1945	1949	Black Creek
88	1918	1921	
88	1924	1949	
89	1929	1949	
90	1918	1925	
90	1929	1949	
91	1918	1924	Cuba
91	1948	1949	Cuba
92	1918	1918	
92	1948	1949	
93	1945	1949	
94	1927	1949	
95	1942	1949	
96	1942	1949	
97	1918	1924	
97	1942	1949	
98	1942	1949	
99	1925	1926	Hinsdale
99	1949	1949	Hinsdale
99	1950	1959	Hinsdale
<b>VS# 2.13 WNY&amp;P Nunda Branch</b>			
1	1918	1919	Nunda Junction
1	1932	1949	Buffalo Div Nunda Junction
2	1918	1924	
2	1947	1949	
3	1918	1919	Nunda
3	1947	1949	Buffalo Div Nunda
4 SL	1930	1949	
5 SL	1918	1949	
6 SL	1918	1949	
7 SL	1918	1949	Swain's
<b>VS# 2.14 WNY&amp;P Scottsville Branch</b>			
1	1944	1949	Buffalo Div Scottsville
2	1918	1925	
2	1944	1949	
3	1918	1923	Garbutt
3	1918	1923	Garbutt
3	1944	1949	Garbutt
3	1954	1954	Garbutt
<b>VS# 2.15 WNY&amp;P Rochester Terminal Branch</b>			
1	1918	1919	

1	1949	1949	
1 A	1918	1922	
1 A	1944	1949	
1 A	1959	1962	
2	1918	1924	
2	1941	1949	
2	1958	1962	
3	1918	1923	
3	1937	1949	
3	1958	1962	
<b>VS# 2.16 WNY&amp;P West Seneca Branch</b>			
1	1942	1942	
1	1947	1949	
1	1947	1952	
2	1947	1949	
2	1963	1963	
3	1947	1949	
4	1947	1949	
5	1921	1923	
5	1947	1949	
6	1918	1919	
6	1947	1949	
6	1957	1962	
6 A	1947	1949	
6 A	1947	1949	
7	1918	1918	
7	1919	1923	
7	1947	1949	
7	1947	1949	
8	1918	1920	
8	1947	1949	
8	1947	1949	
<b>VS# 2.17 WNY&amp;P Olean Facilities</b>			
1 SL		1921	Hinsdale
1 SL	1922	1949	Hinsdale
1 ST		1927	Hinsdale
1 A ST	1947	1949	Hinsdale
1 A ST	1962	1962	
1 B ST	1936	1949	
2 SL	1918	1949	
2 A ST	1944	1949	
2 B ST	1947	1949	
3 SL		1922	
3 SL	1918	1949	
3 SL	1956	1962	
3 ST		1918	

PRRT&HS - State of New York Valuation Maps

<b>3 ST</b>	1918		
<b>3 A ST</b>	1948	1949	
<b>3 B ST</b>	1947	1949	
<b>4 SL</b>		1922	
<b>4 SL</b>		1922	
<b>4 SL</b>	1949	1949	
<b>4 SL</b>	1949	1949	
<b>4 A ST</b>	1948	1949	
<b>4 A ST</b>	1950	1950	
<b>4 B ST</b>	1947	1949	Olean
<b>4 B ST</b>	1947	1949	Olean
<b>4 C ST</b>	1921	1921	
<b>4 C ST</b>	1922	1922	
<b>4 C ST</b>	1923	1923	
<b>4 C ST</b>	1947	1947	
<b>4 C ST</b>	1947	1949	
<b>4 D1</b>	1948	1949	
<b>4 D1A</b>	1949	1949	Olean
<b>4 D2</b>	1948	1949	
<b>4 SL</b>		1935	
<b>5 SL</b>	1949	1949	
<b>5 SL</b>	1949	1950	
<b>5 A ST</b>	1943	1949	Allegany
<b>5 B ST</b>	1947	1949	
<b>5 B ST</b>	1950	1950	
<b>41</b>		1947	Olean
<b>41</b>		1947	Olean
<b>42</b>		1947	Olean
<b>VS# 3.1</b>	<b>WNY&amp;P Chautauqua Branch</b>		
<b>1</b>		1918	
<b>1</b>	1918	1924	
<b>1</b>	1947	1949	
<b>1</b>	1957	1957	
<b>1 L</b>	1918	1918	
<b>1 1</b>	1918	1918	
<b>2</b>		1927	
<b>2</b>	1947	1949	
<b>2</b>	1947	1949	
<b>3</b>	1947	1949	
<b>4</b>		1921	Lackawanna
<b>4</b>	1947	1949	Lackawanna
<b>4</b>	1947	1949	Lackawanna
<b>5</b>		1922	Blasdell
<b>5</b>	1947	1949	Blasdell

<b>VS# 3.2</b>	<b>WNY&amp;P Chautauqua Branch</b>		
<b>1</b>		1919	

<b>1</b>	1943	1949	
<b>2</b>		1918	
<b>2</b>	1941	1949	Cemetery
<b>3</b>		1918	Wanakah
<b>3</b>	1934	1949	Wanakah
<b>4</b>		1918	Lake View, Shaletton
<b>4</b>	1934	1949	Shaletton, Lake View
<b>5</b>		1918	North Evans
<b>5</b>	1946	1949	North Evans
<b>5</b>	1958	1958	Blasdell
<b>6</b>		1918	Derby
<b>6</b>	1944	1949	Derby
<b>7</b>		1918	Pikes Crossing
<b>7</b>	1942	1949	Pikes Crossing
<b>8</b>		1918	Angola
<b>8</b>		1949	Angola
<b>8</b>	1941	1949	Angola
<b>9</b>		1926	
<b>9</b>	1929	1949	
<b>10</b>		1918	Farnham
<b>10</b>	1945	1949	Farnham
<b>11</b>		1918	Irving
<b>11</b>	1942	1949	Irving
<b>12</b>		1918	
<b>12</b>	1945	1949	
<b>13</b>		1918	Silver Creek
<b>13</b>	1945	1949	Silver Creek
<b>14</b>		1918	
<b>14</b>	1944	1949	
<b>15</b>		1918	Sheridan
<b>15</b>	1929	1949	Sheridan
<b>16</b>		1927	
<b>16</b>	1945	1949	
<b>17</b>		1918	
<b>17</b>	1949	1949	
<b>17</b>	1949	1949	
<b>18</b>		1918	Dunkirk
<b>18</b>	1943	1949	Dunkirk
<b>19</b>		1918	
<b>19</b>		1949	
<b>20</b>		1918	Van Buren
<b>20</b>		1949	
<b>21</b>		1918	
<b>21</b>		1949	
<b>21</b>		1949	
<b>22</b>		1923	Brocton
<b>22</b>		1949	Brocton

PRRT&HS - State of New York Valuation Maps

22	1949	1949	Brocton
23		1919	
23		1949	
23	1949	1949	
24		1927	
24		1949	
24		1949	
25		1918	
25		1949	
26		1918	Prospect
26		1949	Prospect
26	1958	1958	Prospect
27		1919	
27		1949	
28		1923	
28		1949	
29	1906	1906	
29		1918	Mayville
29	1949	1949	Mayville
30	1906	1906	
30		1927	
31	1906	1906	
31		1924	
32	1906	1906	
32		1925	summerdale
32	1947	1949	Summerdale
33	1906	1906	
33		1918	
34		1918	Sherman
34		1949	Sherman
34	1955	1957	Sherman
35		1918	
35		1949	
35	1958	1958	
36		1918	
36		1949	
36	1958	1958	Clymer
37		1918	
37		1949	Panama
38		1927	
38		1949	
39		1918	
39		1949	
40		1918	
40	1944	1944	Clymer
40		1949	Clymer

VS#	B	WNY&P Buffalo Lands	
1	1931	1931	
2	1931	1931	
3	1931	1931	