



Pennsylvania Railroad Technical & Historical Society
Lewistown Archives

ICC Valuation Map Index
State of New Jersey

PRRT&HS map reproduction prices as of February 2016:
\$6.00 each

Maps are available as downloadable image files (jpg or pdf) or as printed maps. Orders for printed maps will take longer to complete and a shipping & handling fee will be added. The Lewistown Archives is open 1 week a month and manned by volunteers.

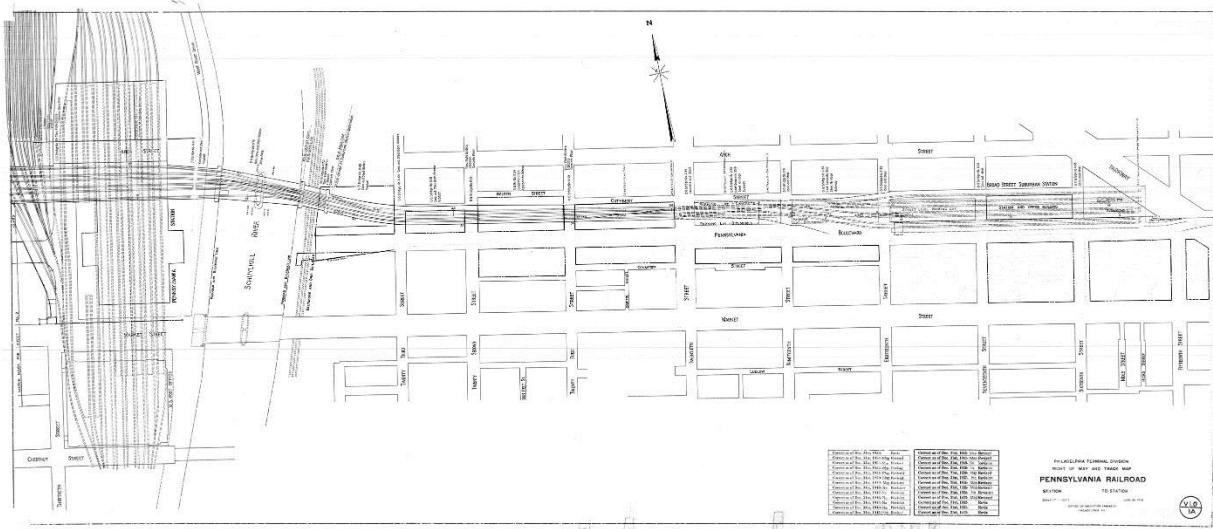
This pdf can be searched for railroad names and locations using the PDF Find command under the Acrobat Reader Edit Menu or press (ctrl or cmd "F"). Holding down the shift key opens the Advanced Search window instead.

Original valuation maps are approximately 24" x 56" and usually cover 1 mile of railroad right of way (1" = 100'). Most were first drawn between 1915 and 1918. Last revision and "correct to" dates are shown when indicated on the map sheet.

Valuation section numbers change at the division or state line. Division names are usually from the time of the map's creation. Branches have subsection numbers or are included in regular sheet numbering. The index is sorted by railroad owner/operator and then by railroad name, state and valuation number at the time of creation. In some cases, this information was revised, changed or additional sheets added at a later date.

Property lines are included on most sheets, unless a separate land sheet was issued – usually designated by an "L" or "SL" in the sheet number. Schedules of property are often redacted from revisions after about 1930.

Pennsylvania Railroad Valuation Section 1 Sheet 1A –Broad Street Suburban & 30th St. Stations 1954



Partial support for this index provided by a grant from the R&LHS

Produced by Stephen Titchenal, www.railsandtrails.com for the PRRT&HS

Atlantic City Railroad

State NJ
sheet # revised correct to Railroad Location

VS# 31.1

2	?	1917	
3	?	1917	
9		1917	
10		1917	
15		1917	
16		1917	
17		1917	
19		1917	Tenth Street
20		1917	Pancoast
23		1917	
24		1917	
48		1917	
54		1917	Tuckahoe
71		1917	
83		1917	
84		1917	Cape May Court House
85		1917	
86		1917	
93		1917	Wildwood Juntion
95		1917	Rio Grande
97		1917	
98		1917	
106		1917	
107		1917	
108		1917	
109		1917	
109		1917	
110		1917	
110		1953	
111		1917	Cold Spring Harbor

VS# 31.2

1		1917	
2		1917	
5		1917	East Gloucester
6		1957	Highland Park
8		1917	Northmont
9		1917	Mt. Ephram

11		1917	Bell Mawr
13		1917	
15		1917	
17		1917	
20		1917	Blackwood
22		1917	Lakeland
23		1917	Grenloch

VS# 31.3

3	?	1917	
3		1960	
5		1917	Palermo
6		1917	
10		1933	Fifty-First Street
10		1957	Fifty-First Street
18		1917	Fourtenth Street
20		1917	
21		1917	Ocean City Gardens

VS# 31.5

1	1927	1927	Atco
5	1917	1917	
31	1917	1917	
32	1917	1917	Glassboro
33	1917	1917	
34	1917	1917	
46	1917	1917	Mullica Hill

VS# 31 Atlantic City Railroad ML

0	1917	1917	
0	1917	1917	
1	1947	1949	Camden
1 A SL	1927	1927	
5	1927	1927	
6	1917	1917	
8	1927	1927	West Collingswood
9	1927	1927	Oaklyn
10	1927	1927	Audubon
11	1927	1927	Orston
12	1917	1917	
13	1917	1917	Haddon Heights Lb400g
13	1917	1917	Haddon Heights
14	1917	1917	Harrington
15	1927	1927	Lawnside

PRRT&HS - New Jersey Valuation Maps

16	1917	1917	
17	1917	1917	Magnolia
18	1917	1917	
19	1917	1917	Somerdale
21	1917	1917	Stratford
22	1917	1917	
22	1942	1949	
23	1927	1927	Laurel Springs
24	1917	1917	Garden Lake
25	1917	1917	Clementon
26	1917	1917	Clementon
34	1931	1931	Penbryn
35	1917	1917	Williamstown Jct.
35	1917	1917	Williamstown Jct.
36	1928	1928	
36	1928	1928	
37	1924	1924	
37	1924	1924	
38	1930	1930	Florence
38	1930	1930	Florence
44	1917	1917	Braddock
44	1917	1917	Braddock
51	1917	1933	
51	1917	1933	
56	1917	1917	
56	1917	1917	
57	1917	1917	
57	1917	1917	
77	1917	1933	
77	1917	1933	
78	1917	1917	
78	1917	1917	
79	1917	1917	Egg Harbor
79	1917	1917	Egg Harbor
100		1917	
101		1917	Greenwood
102		1917	Pleasantville
103		1917	
104		1933	
109		1917	
111	1927	1927	

111	1933	1933	
113		1917	
113	1917	1917	
114		1917	
115		1917	
116		1917	S. Carolina Ave, Virginia Ave
117	?	1917	Massachusetts Ave
117		1959	Massachusetts Ave
VS# 31.4			
Sea Isle Branch (Atlantic City RR)			
1	?	1917	Tuckahoe
2	?	1917	
8	?	1917	Petersburg
14	1927	1927	
15	1927	1927	
16	1927	1927	
17	1927	1927	
18	1917	1917	
19	1927	1927	Corson's
20	1927	1927	
21	1927	1927	Whale Beach Branch
21	1929	1950	Whale Beach
22	1929	1950	
23	1927	1927	
23	1929	1950	
24	1917	1917	Prospect Street
24	1929	1950	Prospect Street
25	1927	1927	
25	1926	1950	
26	1927	1927	Sea Isle City
26	1929	1949	Sea Isle City
26	1929	1950	Sea Isle City
26	1929	1950	Sea Isle City

Harrison and East Newark Connecting R.R.

State	NJ			
sheet #	revised	correct to	Railroad Location	

VS# 1.0

1	1946	1949	
---	------	------	--

New York Bay Railroad

State	NJ			
sheet #	revised	correct to	Railroad Location	

VS# 1

0 1918 1918

VS# 1.1

1 1918

1 1918

1 1946 1948

1 A 1918

1 A 1941 1949

2 1918

2 1948 1948

2 A 1918

2 A 1945 1948

3 1918

3 1946 1948

3 A 1918

3 A 1946 1948

4 1929

4 1946 1948

5 1927

5 1946 1948

VS# 1.11

1 1919

1 1946 1948

2 1918

2 1948 1948

3 1920

3 1947 1948

4 1919

4 1946 1948

4 A 1946 1948

4 B 1943 1948

5 1922 Passaic River Bridge

5 1946 1948

VS# 1.13

1 1918 1923

1 1947 1948

2 1918 1918

2 1948 1948

VS# 1.2

1 SL 1918 1920

1 SL 1947 1948

1 ST 1946 1948

2 SL 1918 1920

2 SL 1921 1948

2 ST 1946 1948

2 A 1918 1918

2 A 1947 1948

3 1946 1948

Perth Amboy & Woodbridge Railroad

State	NJ			
sheet #	revised	correct to	Railroad Location	

VS# 1.0

1 1947 1948

2 1948 1948 Avenel

3 1945 1948 Edgar, Woodbridge

4 SL 1940 1948

4 ST 1945 1948 Woodbridge, Genasco (Spa

5 1946 1948

6 1947 1948

7 1946 1948 Perth Amboy

Pennsylvania Tunnel & Terminal Railroad

State	NJ			
sheet #	revised	correct to	Railroad Location	

VS# 1.0

1 1938 1949

2 1947 1949

3 1945 1949

3 A 1938 1949

4 1945 1949

5 1945 1949

6 1945 1949

7 1945 1949 Kearny Sub-Station

VS# 1.01

1 1945 1949

1 A 1926 1949

Stone Harbor Railroad

State	NJ			
sheet #	revised	correct to	Railroad Location	

VS# 53

1 1936 1940 Cape May Court House

1 1956 1959 Cape May Court House

2 1936 1940 Stone Harbor

PRRT&HS - New Jersey Valuation Maps

2 1955 1959 Stone Harbor

Union Transportation Company

State NJ
sheet # revised correct to Railroad Location

VS# 1.0

1 1930 1948 Sharon
2 1928 1948 New Egypt
3 1918 1948 Imlaystown

Wildwood & Delaware Bay Short Line

State NJ
sheet # revised correct to Railroad Location

VS# 52

1 1955 1955 Wildwood
1 1955 1955 Wildwood
2 1955 1955
4 1955 1955 Wildwood Junction

West Jersey & Seashore

State NJ
sheet # revised correct to Railroad Location

VS# 1.1

1 1927 Camden Ferry House
1 A 1927
2 1919
2 A 1927 Broadway
2 B 1927
2 C 1927 Pavonia
3 1916 Liberty Park
4 1917

VS# 2.31

1 1916 1916 Newfield
2 1916 1933
3 1916 1933
4 1916 1923 Forest Grove
5 1916 1933 Minotola
6 1916 1922 Buena
7 1916 1927
8 1916 1933
9 1916 1928
10 1916 1927 Richland
11 1916 1927
12 1916 1923 Mizpah

13 1916 1918

14 1916 1929

15 1916 1933

16 1916 1927

17 1916 1917 Mays Landing

18 1916 1916 Mays Landing, Mays Landing

19 1916 1930

20 1916 1933

21 1916 1930

22 1916 1927 Reega

23 1916 1927

24 1916 1920 McKee City

25 1916 1927

26 1916 1923 Cardiff

27 1916 1917

28 1916 1927 Mount Calvary

29 1916 1917 Pleasantville Cemetary

30 1916 1927 Pleasantville

31 1916 1923

32 1916 1923

33 1916 1922

34 1916 1927

35 1916 1927

VS# 2.32

1 1916 1919 Smith's Landing

2 1916 1919 Dolphin, Northfield

3 1916 1917 Bakerville

4 1916 1927 Linwood

5 1916 1927 Belhaven, Sea View

6 1916 1922

7 1916 1921 Launch Haven

8 1916 1922 Somers Point

VS# 2.33

1 1916 1927

2 1916 1916 Atlantic City

3 1916 1933

4 1916 1917

5 1916 1924 Ventnor

6 1916 1920

7 1916 1917

8 1916 1918

PRRT&HS - New Jersey Valuation Maps

9	1916	1922	Longport
VS# 3.01			
1	1916	1916	
VS# 3.02			
1	1916	1923	
2	1923	1923	
3	1916	1921	
4	1916	1923	
5	1916	1927	
5	1916	1948	
VS# 3.04			
8	1916	1916	Green, Gibbstown
8	1916	1923	Green, Gibbstown
8	1916	1950	Green, Gibbstown
9	1916	1916	
10	1916	1917	Repaupo
11	1917	1917	Cooper
12	1916	1916	Bridgeport
13	1916	1920	Prospect
14	1916	1926	
15	1916	1918	Centre Square, Jumbo
16	1916	1916	Pedricktown
17	1916	1918	Oldman
18	1916	1917	Perkintown
20	1916	1916	Friendship, Pennsgrove
21	1916	1916	
22	1916	1927	
VS# 3.05			
1	1916	1916	Paulsboro
VS# 1.2 West Jersey & Seashore			
1		1916	
2		1916	Collingswood
3		1921	Westmont
4		1917	Haddonfield, West
5		1919	
6		1922	Woodcrest
7		1921	Ashland
8		1916	Osage
9		1917	Kirkwood
10		1922	Lindenwold
11		1922	Lucaston

12	1942	West Berlin	
13	1923	Reed Crossing	
14	1922	Berlin	
15	1924	Bishops Bridge	
16	1922	Atco	
18	1916	1916	Dunbarton, Fisher
19	1916	1921	Chesilhurst
20	1916	1916	Waterford
22	1916	1918	Ancora
23	1916	1926	
24	1916	1922	Winslow Junction
24 A	1916	1922	
25 ST	1916	1922	
26	1916	1922	Murphy, Sanitarium
27	1916	1921	
28	1916	1917	Hammonton
29	1916	1923	
30	1916	1923	Da Costa
31	1916	1917	East Hammonton
32	1916	1917	Magnolia
33	1916	1923	
34	1916	1923	Elwood
35	1916	1923	
36	1916	1923	
37	1916	1917	
38	1916	1917	
39	1916	1921	Egg Harbor
40	1916	1922	
41	1916	1916	
42	1916	1921	
43	1916	1921	
44	1916	1921	Pomona
45	1916	1921	
48	1916	1921	
49	1916	1917	Absecon
50	1916	1917	
51	1916	1920	
52	1916	1916	
53	1916	1921	
55	1916	1916	Drawbridge
55 A	1949	1949	

PRRT&HS - New Jersey Valuation Maps

55 B	1916	1949	
56	1916	1917	
VS# 1.21	WJ&S Atlantic City Div (Camden & Atlantic)		
1	1916	1918	
1	1916	1918	
VS# 1.22	Medford Branch (WJ&S)		
1	1916	1916	Haddonfield
2	1916	1924	Freeman
3	1916	1923	Orchard
4	1916	1920	Springdale
5	1916	1926	Locust Grove
6	1916	1926	Cropwell
7	1916	1918	Marlton
8	1916	1926	Locust Grove
9	1916	1926	Elmwood
11	1916	1916	Melrose
12	1916	1922	Medford
VS# 1.24	Chelsea Branch (WJ&S)		
1	1916	1916	
2	1916	1916	
3	1916	1922	
VS# 2.1	West Jersey & Seashore		
1	1916	1916	
1	1916	1916	
VS# 2.2	West Jersey & Seashore		
1	1916	1916	Broadway
1 A SL	1916	1949	
2	1916	1916	Kaighn Ave., Ferry Ave.
3	1916	1917	Fairview St.
VS# 2.3	Cape May Div		
1	1916	1918	Gloucester
2	1916	1918	South Gloucester
3	1916	1917	Westville
4	1916	1918	South Westville
5	1916	1917	North Woodbury
5	1916	1949	North Woodbury
6	1918	1918	Woodbury
7	1916	1917	Woodbury Heights
8	1916	1920	North Woodbury
9	1916	1924	Wenona

10	1916	1921	North Woodbury
11	1916	1917	Sewell
13	1916	1918	Pitman Grove
15	1916	1921	Glassboro
16	1916	1916	South Glassboro
17	1916	1925	
18	1916	1925	
19	1916	1917	Clayton
20	1916	1944	
21	1916	1925	
22	1916	1920	Franklinville
23	1916	1927	Iona
24	1916	1927	
25	1916	1916	Malaga
26	1916	1927	
27	1916	1916	Newfield
29	1916	1925	North Vineland
31	1916	1925	
32	1916	1917	Vineland
33	1916	1924	
34	1916	1916	South Vineland
35	1920	1920	Clayville
36	1916	1918	
37	1916	1918	Millville
VS# 3.06	Riddleton Branch (WJ&S)		
1	1916	1927	Elmer
4	1916	1922	Newkirk
5	1916	1921	Daretown
6	1916	1925	
7	1916	1927	Paulding
8	1916	1918	Yorketown
10	1916	1921	Oakland
11	1916	1949	Riddleton
VS# 3.07	Quinton Branch (WJ&S)		
1	1916	1922	Alloway Junction
2	1916	1927	Alloway
3	1916	1918	
3	1916	1923	
4	1916	1925	
5	1916	1923	Quinton

Belvidere Delaware Railroad

Pennsylvania Railroad

State	NJ		
sheet #	revised	correct to	Railroad Location

VS# 1

1	1918	1919	Warren Street
2	1918	1918	Gadwalder
3	1918	1918	Dix Haven
4	1918	1927	
5	1926	1927	Wilburtha
6	1918	1927	Scudder Falls
7	1918	1919	Somerset
9	1918	1922	Washington Crossing
10	1918	1919	Titusville
12	1918	1927	Moore
13	1918	1926	
14	1918	1920	
15	1918	1919	Lambertville
16	1918	1919	
18	1918	1927	
19	1918	1922	Stockton
20	1918	1923	
21	1918	1923	
22	1918	1923	Raven Rock
24	1918	1918	Byram
27	1918	1927	
31	1918	1918	Frenchtown
32	1918	1920	
34	1918	1920	
35	1918	1919	
37	1918	1918	
38	1918	1918	Holland
39	1918	1924	
40	1918	1927	
41	1918	1918	Rigelsville
43	1918	1924	
45	1918	1923	Carpenterville
46	1918	1927	
48	1918	1925	
49	1923	1925	
49	1942	1942	

49	1942	1942	
50	1918	1918	Phillipsburg
51	1918	1921	
55	1918	1923	Harmony
56	1918	1926	
57	1918	1918	Martin's Creek
59	1918	1927	Hutchinson
60	1918	1930	
62	1927	1927	Foul Rift
63	1918	1923	
64	1918	1920	Belvidere
66	1918	1924	
67	1959	1959	Manunka Chunk

VS# 1.0

Belvidere Delaware ML

0	1918	1918	
1	1947	1949	Warren Street
2	1947	1949	Gadwalder
3	1947	1949	Dix Haven
4	1927	1927	Washington Crossing
4	1948	1949	
5	1947	1949	Wilburtha
6	1947	1949	Scudder Falls
7	1947	1949	Somerset
8	1947	1949	
9	1947	1949	Washington Crossing
10	1947	1949	Titusville
11	1947	1949	
12	1947	1949	Moore
13	1947	1949	
14	1947	1949	
15	1947	1949	Lambertville
16	1947	1949	
17	1947	1949	
18	1947	1949	
19	1947	1949	Stockton
20	1947	1949	
21	1947	1949	
22	1947	1949	Raven Rock
23	1947	1949	
24	1947	1949	Byram
25	1947	1949	

PRRT&HS - New Jersey Valuation Maps

26	1947	1949	Tumble Falls
27	1947	1949	
28	1947	1949	Kingwood
29	1947	1949	
30	1947	1949	
31	1948	1949	Frenchtown
32	1947	1949	
33	1947	1949	
34	1947	1949	
35	1947	1949	Milford
36	1947	1949	
37	1947	1949	
38	1947	1949	Holland
39	1947	1949	
40	1947	1949	
41	1947	1949	Riegelsville
42	1947	1949	
43	1947	1949	
44	1947	1949	
45	1947	1949	Carpenterville
46	1947	1949	
47	1947	1949	
48	1943	1946	
48	1947	1949	
49	1918	1918	
49	1923	1925	
49	1942	1942	
49	1948	1949	
50	1942	1942	Phillipsburg, Lehigh Junction
50	1947	1949	Phillipsburg, Lehigh Junction
51	1947	1949	
52	1947	1949	
53	1947	1949	
54	1947	1949	
55	1947	1949	
56	1947	1949	
57	1947	1949	Martins Creek
58	1947	1949	
59	1947	1949	Hutchinson
60	1947	1949	Roxburg
61	1947	1949	

62	1947	1949	Foul Rift Trenton Div
63	1947	1949	
64	1947	1949	Belvidere
65	1947	1949	
66	1947	1949	
67	1944	1949	Manunka Chunk

VS# 1.01 Enterprise Branch

1	1918	1918	
1	1947	1949	
1	1947	1949	
2	1918	1921	
2	1947	1949	
3	1947	1949	
4	1947	1949	
5	1947	1949	

VS# 1.02 Flemington Branch

1		1919	
1	1947	1949	
2	1947	1949	Alexauken
3	1947	1949	Mt. Airy
4	1934	1949	Bowne
5	1947	1949	
6	1947	1949	Boss Road
7	1947	1949	Ringoes
8	1947	1949	Muirheads
9	1947	1949	
10	1947	1949	Copper Hill
11	1947	1949	
12		1920	Flemington
12	1947	1949	Flemington

VS# 1.03 Martins Creek Branch (NJ)

1	1947	1949	Martins Creek
----------	------	------	---------------

Camden & Burlington County Railway

Pennsylvania Railroad

State	NJ		
sheet #	revised	correct to	Railroad Location

VS# 1.0 Camden & Burlington County ML

1	1918	1918	
1	1948	1949	
1	1939	1950	

PRRT&HS - New Jersey Valuation Maps

2	1918	1927	Wellwood
2	1949	1949	West Merchantville
3	1918	1918	Merchantville
3	1949	1949	Merchantville, Pensauken
4	1940	1949	
5	1937	1949	Maple Shade
5	1943	1949	Hainesport
6	1918	1924	Lenola
6	1949	1949	Lenola
7	1918	1921	
7	1946	1949	
8	1918	1922	Moorestown, West
8	1948	1949	West Moorestown,
9	1920	1921	Stanwick Ave
9	1948	1949	Stanwick Avenue
10	1935	1949	
11	1918	1919	Hartford
11	1947	1949	Hartford
12	1946	1949	Masonville
13	1941	1942	
13	1948	1949	
14	1941	1949	
15	1918	1922	Hainesport
15	1943	1949	Hainesport
16	1918	1922	Mt. Holly
16	1946	1949	Mt. Holly
17	1918	1918	Mt. Holly
17	1941	1949	Mt. Holly
17	1941	1949	Mt. Holly
18	1918	1927	
18	1935	1949	
19	1918	1918	Smithville
19	1943	1949	Smithville
20	1923	1925	Ewansville
20	1941	1949	Ewansville
21	1918	1920	Birmingham
21	1947	1949	Birmingham
22	1918	1927	
22	1941	1949	
23	1918	1918	Pemberton
23	1948	1949	Pemberton

23	1948	1949	Pemberton
VS# 1.01		Mt. Holly & Medford Branch (C&BJ)	
1	1941	1949	
2	1918	1926	Lumberton
2	1937	1949	Lumberton
3	1918	1920	Brown
3	1935	1949	
4	1935	1949	
5	1935	1949	Reeves
6	1918	1920	Wilkins
6	1943	1949	Wilkins
7	1938	1949	
VS# 1.02		Burlington Branch (C&BJ)	
1	1918	1921	
1	1927	1949	
1	1927	1951	
2	1918	1918	Fountain Woods
2	1927	1949	Fountain Woods
3	1918	1921	
3	1927	1949	
3	1927	1951	
4	1927	1949	
5	1927	1949	
6	1918	1922	Wood Lane
6	1927	1949	Mt. Holly Fairgrounds
6	1927	1951	Wood Lane
7	1918	1919	Grant Street
7	1940	1949	
8	1918	1927	Mt. Holly
8	1940	1949	Mt. Holly
VS# 1.03		Vincentown Branch (C&BJ)	
1	1918	1918	Ewansville
1	1942	1949	Ewansville
2	1918	1927	
2	1930	1949	
3	1918	1927	Vincentown
3	1932	1949	Vincentown
3	1932	1955	Vincentown

Freehold & Jamestown Agricultural Railroad

Pennsylvania Railroad

PRRT&HS - New Jersey Valuation Maps

State	NJ			
sheet #	revised	correct to	Railroad Location	

VS# 1

1	1918	1918	Lower Jamesburg
1	1943	1948	Lower Jamesburg
12	1957	1957	Freehold
27	1923	1925	Manasquan
28	1957	1960	Sea Girt

VS# 1.0

1	1918	1923	Lower Jamesburg
1	1943	1948	Lower Jamesburg
2	1918	1922	
2	1935	1948	
3	1935	1948	
4	1935	1948	Hoffman
5	1918	1928	Tracey
5	1934	1948	Tracey
6	1935	1948	
7	1918	1923	Englishtown
7	1945	1948	Englishtown
8	1918	1927	Tennent
8	1935	1948	Tennent
9	1918	1919	
9	1934	1948	
10	1935	1948	
11	1918	1922	
11	1938	1948	
12	1918	1918	Freehold
12	1947	1948	Freehold
13	1918	1925	
13	1947	1948	
14	1918	1927	
14	1945	1948	
15	1918	1922	Howell
15	1947	1948	Howell
16	1935	1948	Fairfield
17	1918	1926	
17	1935	1948	
18	1918	1922	Yellow Brook
18	1944	1948	Yellow Brook
19	1918	1922	Farmingdale
19	1945	1948	Farmingdale

20	1935	1948	
21	1918	1948	
22	1918	1922	
22	1935	1948	
23	1923	1925	Allaire
23	1935	1948	Allaire
24	1918	1918	Allenwood
24	1947	1948	Allenwood
25	1918	1924	
25	1937	1948	
27	1918	1919	Manasquan
27	1946	1948	Manasquan
28	1939	1948	Sea Girt
262	1942	1948	

Harrison and East Newark Connecting R.R.

Pennsylvania Railroad

State	NJ			
sheet #	revised	correct to	Railroad Location	

VS# 1

1		1922	
---	--	------	--

Pennsylvania & Atlantic

Pennsylvania Railroad

State	NJ			
sheet #	revised	correct to	Railroad Location	

VS# 1.1

1		1918	Birmingham
2		1918	South Pemberton
3		1922	
5		1920	New Lisbon
6		1925	Browns Mills Jct.
7		1924	
8		1928	
9		1929	
13		1918	
15		1927	
16		1929	
17		1929	
18		1922	
19		1928	Whitings
23		1922	Crossley
24		1922	
27		1928	

PRRT&HS - New Jersey Valuation Maps

28		1924	
30	1922	1926	Pine Beach
31	1918	1927	
33	1918	1924	Barnegat Pier
33	1927	1927	Barnegat Pier
35	1918	1920	
35	1951	1951	Seaside Park t3
35	1951	1951	Seaside Park t4
35	1951	1951	Seaside Park t4
36	1918	1920	Berkeley
36	1949	1951	Berkeley
37	1918	1923	Seaside Heights
37	1952	1952	Seaside Heights
38	1918	1920	Ortley
38	1951	1951	Ortley
39	1918	1922	Lavallette
39	1952	1952	Lavallette
40	1918	1927	Chadwick
41	1951	1951	Normandy Beach
42	1951	1951	
43	1927	1928	Mantoloking
43	1951	1951	Mantoloking
44	1951	1951	
45	1951	1951	
46	1918	1918	Bay Head
46	1957	1957	
VS# 1.11			
1	1918	1924	Browns Mills Jct.
2	1918	1918	Browns-Mills-in-the-Pines
VS# 1.12			
1	1918	1918	Pine Beach, River Bank
2	1918	1920	Island Heights
VS# 1.3			
1	1921	1921	
1	1948	1949	
2	1918	1929	Day
2	1948	1949	Day
3	1918	1929	Sharp
3	1948	1949	Sharp
4	1918	1920	Columbus
4	1918	1923	Columbus

4	1948	1949	Columbus
5	1948	1949	Columbus
6	1918	1927	Fowell
6	1939	1949	
7	1918	1924	
7	1939	1949	
8	1918	1918	Jobstown
8	1941	1949	Jobstown
9	1927	1949	Pine Lane, Ellis
10	1948	1949	Juliustown
11	1918	1918	Lewistown
11	1940	1949	Lewistown
11	1918	1952	Lewistown
11	1918	1952	Lewistown

Perth Amboy & Woodbridge Railroad

Pennsylvania Railroad

State	NJ			
sheet #	revised	correct to	Railroad Location	

VS# 1				
1		1918		Perth Amboy
2		1918		Avenel
3		1923		Spa Spring
3		1927		Woodbridge, Edgar
5		1920		
6		1925		
7		1925		Perth Amboy

Pennsylvania Tunnel & Terminal Railroad

Pennsylvania Railroad

State	NJ			
sheet #	revised	correct to	Railroad Location	

VS# 1				
1		1918	1918	
2		1918	1925	
3		1918	1925	
3		1918	1925	
6		1945	1950	

VS# 1.01				
1		1918	1918	
1		1919	1919	
1		1918	1921	

Rocky Hill Railroad and Transportation

Pennsylvania Railroad

State	NJ			
sheet #	revised	correct to	Railroad Location	

VS# 1

1	1948	1949	Kingston	
1	6/30	6/30	Kingston	
2	1941	1949		
2	6/30	6/30		
3		1925	Rocky Hill	
3	1947	1949	Rocky Hill	

United New Jersey Railroad & Canal Company

Pennsylvania Railroad

State	NJ			
sheet #	revised	correct to	Railroad Location	

VS# 1.01

1	1918	1923		
1	1949	1949		
1 SL	1918	1949		
2	1918	1919		
2	1946	1946		
2 SL	1918	1918		
2 SL	1948	1949		
2 ST	1949	1949		

VS# 1.02

1	1918	1918		
1	1946	1949	Sidings, Hudson & Essex	

VS# 1.03

1	1918	1927		
1	1946	1949		

VS# 1.04

1	1918	1918		
1	1946	1949		

VS# 1.05

1	1935	1944		
1	1947	1949		
2	1918	1922		
2	1947	1949		

VS# 2.1

1	1949	1949	Jersey City	
1 SL		1948		

1 SL	1943	1949	Jersey City	
2	1948	1949	Journal Square (Summit Ave)	
2 SL	1948	1949		
3		1919	Marion	
3	1946	1949	Marion	
4	1948	1949		
4 SL	1946	1949		
5	1948	1949		
5 SL	1946	1949		
6	1946	1949		
6 SL	1923	1949		
7	1945	1949	Manhattan Transfer	
7 SL	1948	1949	Manhattan Transfer	
7 A	1948	1949		
8 SL	1943	1949		
8 ST	1942	1949	Fourth St. (Harrison)	
VS# 2.2				
1 SL	1943	1949	Newark	
1 ST	1943	1949	Newark	
2	1948	1949	South Street	
3	1947	1949	Waverly	
3 SL	1943	1949		
4	1949	1949		
4 SL	1943	1949		
5	1949	1949	North Elizabeth	
6	1949	1949	Elizabeth	
7	1946	1949	South Elizabeth	
8	1949	1949		
9	1949	1949	Linden	
10	1949	1949		
10 A	1949	1949		
10 B	1946	1949		
10 C	1949	1949		
11	1949	1949	Rahway, North Rahway	
12	1948	1949	Rahway Sub-Station	
13	1947	1949		
14	1947	1949	Colonia	
15	1948	1949	Iselin	
16		1924	Menlo Park	
16	1947	1949	Menlo Park	
17	1947	1949		

PRRT&HS - New Jersey Valuation Maps

17	1957		38	1947	1949	Plainsboro
17 A	1918	1949	38 A	1918	1949	
18	1919	Metuchen	38 B	1918	1949	
18	1947	1949	38 B		1951	
19	1918		39		1918	Princeton Junction
19	1949	1949	39	1947	1949	Princeton Junction,
20	1927		40		1924	
20	1949	1949	40	1947	1949	
21	1923	Stelton	41	1947	1949	
21	1947	1949	42	1947	1949	
22	1947	1949	43		1926	Lawrence
23	1921	New Brunswick	43	1947	1949	Lawrence
23	1947	1949	44		1926	
24	1919	New Brunswick	44	1947	1949	
24	1947	1949	45		1923	
25	1919		45	1947	1949	
25	1949	1949	46		1918	Trenton Shop Yard
26	1923		46	1947	1949	Trenton Ship Yard
26	1949	1949	46 A		1923	
27	1927		46 A	1947	1949	
27	1947	1949	47		1919	
28	1923	Adams	47	1947	1949	
28	1947	1949	48	1949	1949	'DO' Tower
29	1947	1949	48 SL		1919	
29	1952		48 SL	1949	1949	
30	1939		49		1922	Trenton
30	1949	1949	49	1949	1949	Trenton
31	1921	Deans	50		1921	
31	1947	1949	50	1947	1949	
32	1923		VS# 2.210			
32	1947	1949	1		1919	Warren St. Station
33	1927	Monmouth Junction	1	1940	1941	Warren St.
33	1947	1949	2		1922	Cadwalder
34	1927		2	1940	1941	Cadwalader
34	1947	1949	3		1919	Dix Haven
35	1925		3	1940	1941	Dix Haven
35	1947	1949	4	1940	1941	
36	1947	1949	5		1923	Wilburtha
37	1923		5	1940	1941	Wilburtha
37	1947	1949	6		1923	
38	1918	Plainsboro	6	1947	1947	Scudder Falls

PRRT&HS - New Jersey Valuation Maps

7		1923	Somerset	VS# 2.22		
7	1941	1941	Somerset	1	1920	
8		1941		2	1919	Raritan Arsenal
8	1940	1941		VS# 2.23		
9		1941	Washington's Crossing	1	1925	
9	1940	1941	Washington's Crossing	3	1927	Clyde
10		1941	Titusville	6	1918	
10	1940	1941	Titusville	7	1924	Millstone
11		1941		VS# 2.24		
11	1940	1941		1	1924	Monmouth Junction
12		1941	Moore	2	1923	
12		1941	Moore	3	1924	
12	1940	1941	Moore	5	1924	
13		1941		VS# 2.241		
13	1940	1941		1	1924	
14	1940	1941		VS# 2.25		
15		1923	Lambertville	1	1920	Princeton Junction
15	1940	1941	Lambertville	2	1921	Penn's Neck
16		1920		3	1918	Princeton
16	1945	1945		VS# 2.26		
17		1941		1	1922	
17	1940	1941		2	1920	
18		1941		VS# 2.27		
18	1940	1941		1	1919	
19		1923	Stockton	2	1920	
19	1940	1941	Stockton	VS# 2.28		
20		1923		1	1951	
20	1940	1941		1 ST	1918	
21		1941		1 ST	1918	
21	1940	1941		VS# 2.29		
22		1927	Raven Rock	1	1941	
22	1940	1941	Raven Rock	1	1941	
23		1941		2	1941	
23		1941		3	1941	
23	1940	1941		4	1941	Baker's Basin
VS# 2.21a				5	1918	
1		1918		5	1944	
2		1927	Newark (Market St)	6	1941	Clarksville or Port Windsor
VS# 2.21b				7	1941	Clarksville or Port Windsor
1		1927	Harrison	8	1941	
2		1921	Park Place			

PRRT&HS - New Jersey Valuation Maps

9	1941	Princeton Basin	2	1927	Morris
10	1941		3	1923	Arch St. Palmyra
11	1941	Millstone River	4	1919	Palmyra, Riverton
12	1941		5	1925	
13	1947	Kingston	6	1918	Taylor
14	1941		7	1927	Cambridge
15	1941	Rocky Hill	8	1922	Riverside, Delanco
16	1941		9	1922	
17	1941	Griggstown	10	1920	Perkins, Beverly
18	1941		11	1927	Edgewater
19	1941		12	1926	Shedeker
20	1941		13	1949	
21	1941	Blackwells Mills, Van Dyne	14	1918	Burlington, East Burlington
22	1941		14 A	1927	
23	1941	East Millstone (Johnsville)	15	1922	
24	1941	East Millstone (Johnsville)	16	1928	Stevens
25	1941		18	1925	
26	1941		19	1927	Roebing
27	1926	Lock 10	20	1918	Kinkora
28	1941		21	1918	
29	1924	Lock 11, Bound Brook	22	1920	Fieldsboro
30	1941		23	1919	Bordentown
31	1941	Lock 12	24	1927	
32	1941		25	1918	
33	1941		26	1918	Yardville
34	1941		28	1927	
35	1922	Raritan Landing	29	1927	
35	1941	Raritan Landing	30	1925	Robinsville
37	1923	Lock 14	33	1924	Windsor
38	1941		35	1924	
39	1948		36	1918	Hightstown
VS# 3.1			37	1918	
1 b SL	1921		39	1918	Cranbury
1 bef ST	1943	1955	40	1924	Prospect Plains
4	1947		43	1918	
4	1947		44	1918	Jamesburg
5	1927	Fish House	45	1919	Helmetta
VS# 3.14			46	1921	1927
1	1923		47	1919	Spotswood
VS# 3.2			48	1927	
1	1923	Delair	49	1927	

50	1923	Old Bridge
51	1918	Runyon
52	1946	Runyon, Brown
52	1946	Runyon, Brown
52 A	1918	
52 A	1951	
54	1918	
55	1918	
56	1918	
57	1918	

VS# 3.21

2	1927	
---	------	--

VS# 3.23

1	1918	Bordentown
2	1918	
3	1927	
4	1921	
5	1919	
6	1919	Broad Street

VS# 3.24

1	1951	Jamesburg Junction
4	1927	Dayton
5	1924	
6	1925	Monmouth Junction

VS# 5a

1	1953	1953
---	------	------

VS# 203

1	1918	1918
---	------	------

Barnegat Railroad

Tuckerton Railroad

State	NJ			
sheet #	revised	correct to	Railroad Location	

VS# 1.0

1	1921	1923	Surf City, Harvey Cedars,
1	1926	1929	Surf City, Harvey Cedars,
2	1919	1923	Love Ladies Island, Barnegat
2	1926	1929	Love Ladies Island, Barnegat

Philadelphia & Beach Haven

Tuckerton Railroad

State	NJ			
sheet #	revised	correct to	Railroad Location	

VS# 1

1	1943	1948	Manahawken, Hilliard
2	1944	1948	Barnegat City Junction,
3	1944	1948	Peahala, North Beach Haven,

VS# 1.0

1	1916	1916	Manahawken, Hilliard
2	1916	1919	Barnegat City Junction
3	1916	1917	Beach Haven

Pennsylvania & Atlantic

Union Transportation Company

State	NJ			
sheet #	revised	correct to	Railroad Location	

VS# 1.2

1	1935	1949	
2	1940	1949	
3	1918	1922	Allens
3	1942	1949	Allens
4	1927	1927	Sharon
4	1938	1949	Sharon
5	1918	1949	
6	1918	1922	Shrewsbury
6	1940	1949	Shrewsbury
7	1945	1949	Imlaystown
7	1952	1952	Imlaystown
8	1918	1920	Davis
8	1943	1949	Davis
9	1926	1927	Cream Ridge
9	1940	1949	Cream Ridge
10	1918	1920	Cream Ridge
10	1944	1949	Cream Ridge
11	1941	1949	
12	1946	1949	Hornerstown
13	1940	1949	
13	1940	1950	
14	1940	1949	New Egypt
15	1936	1949	
16	1940	1949	Cookstown
17	1927	1949	Cookstown
18	1918	1949	
19		1920	Wrightstown
19	1918	1920	Wrightstown

19	1941	1949	Wrightstown
20	1918	1920	Camp Dix
20	1918	1920	Wrightstown
20	1943	1949	Wrightstown
21	1918	1919	
21	1918	1919	
21	1945	1949	
22	1918	1920	Lewistown
22	1943	1949	Lewistown
23	1946	1949	Shreve
24	1918	1920	
24	1935	1949	
25	1935	1949	Pemberton
25	1918	1957	Pemberton

Coopers Point & Philadelphia Ferry Co.

West Jersey & Seashore

State	NJ			
sheet #	revised	correct to	Railroad Location	

VS# 1 Coopers Point & Philadelphia Ferry Co.

1 01 PA 1927 1936 Camden

Delaware River Railroad & Bridge Company

West Jersey & Seashore

State	NJ			
sheet #	revised	correct to	Railroad Location	

VS# 2.0 Delaware River Railroad & Bridge Co. (PA)

1	1949	1949	
2	1946	1949	
3	1941	1949	
4	1941	1949	
5	1946	1949	
6	1948	1949	

VS# 2.01 Branch No. 1 (DR&B)

1 1949 1949

VS# 2.02 Branch No. 2 (DR&B)

1 1949 1949

Kensington & New Jersey Ferry Co.

West Jersey & Seashore

State	NJ			
sheet #	revised	correct to	Railroad Location	

VS# 1 Kensington & New Jersey Ferry Company

1 01 PA 1927 1940 Camden

Philadelphia & Camden Ferry Company

West Jersey & Seashore

State	NJ			
sheet #	revised	correct to	Railroad Location	

VS# 1 Philadelphia & Camden Ferry Company

1 01 PA 1942 1942 Camden

VS# 12 Philadelphia & Camden Ferry Company

1 1916 1916