



Pennsylvania Railroad Technical & Historical Society Lewistown Archives

ICC Valuation Map Index State of Maryland

PRRT&HS map reproduction prices as of February 2016:
\$6.00 each

Maps are available as downloadable image files (jpg or pdf) or as printed maps. Orders for printed maps will take longer to complete and a shipping & handling fee will be added. The Lewistown Archives is open 1 week a month and manned by volunteers.

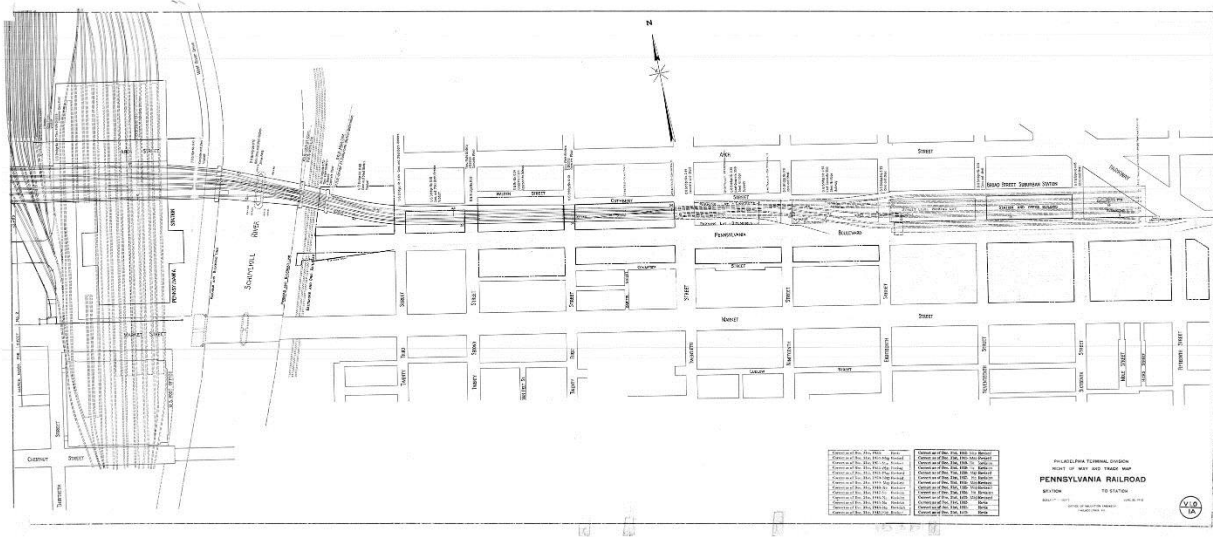
This pdf can be searched for railroad names and locations using the PDF Find command under the Acrobat Reader Edit Menu or press (ctrl or cmd "F"). Holding down the shift key opens the Advanced Search window instead.

Original valuation maps are approximately 24" x 56" and usually cover 1 mile of railroad right of way (1" = 100'). Most were first drawn between 1915 and 1918. Last revision and "correct to" dates are shown when indicated on the map sheet.

Valuation section numbers change at the division or state line. Division names are usually from the time of the map's creation. Branches have subsection numbers or are included in regular sheet numbering. The index is sorted by railroad owner/operator and then by railroad name, state and valuation number at the time of creation. In some cases, this information was revised, changed or additional sheets added at a later date.

Property lines are included on most sheets, unless a separate land sheet was issued – usually designated by an "L" or "SL" in the sheet number. Schedules of property are often redacted from revisions after about 1930.

Pennsylvania Railroad Valuation Section 1 Sheet 1A –Broad Street Suburban & 30th St. Stations 1954



Partial support for this index provided by a grant from the R&LHS

Produced by Stephen Titchenal, www.railsandtrails.com for the PRRT&HS

Baltimore & Eastern

State sheet #	MD revised	correct to	Railroad Location
---------------	------------	------------	-------------------

VS# 1.02

1	1939	1949	
26	1948	1949	Queen Ann (DRR)
27	1935	1949	
28	1935	1949	
29	1935	1949	
30	1935	1949	
31	1935	1949	
32	1935	1949	
33	1949	1949	
34	1949	1949	

VS# 1 Baltimore & Eastern ML

1	1945	1949	Chester, Love Point
2	1935	1949	
3	1935	1949	
4	1939	1949	Stevenson
5	1935	1949	
6	1943	1949	Chester
7	1935	1949	
8	1939	1949	Narrows
9	1935	1949	
9 A	1939	1949	
10	1948	1949	Grasonville (Winchester)
11	1935	1949	Walsey
12	1935	1949	
13	1935	1949	Queenstown
14	1942	1949	Queenstown
14 A	1941	1949	Queenstown
15	1935	1949	
16	1948	1949	Bloomingdale
17	1927	1949	
18	1927	1949	
19	1941	1949	Wye Mills

20	1935	1949	
21	1935	1949	
22	1948	1949	Willoughby
23	1935	1949	
24	1935	1949	
25	1948	1949	Denton Branch Junction

VS# 1.01 Centreville Branch

1	1939	1949	
2	1939	1949	Briston
3	1939	1949	
4	1939	1949	
5	1939	1949	
6	1947	1949	Centreville

Baltimore & Sparrows Point R.R. Co.

State sheet #	MD revised	correct to	Railroad Location
---------------	------------	------------	-------------------

VS# 1 ML (B&SP)

1	1915	1915	Sutton, St. Helena
1	1948	1949	Sutton, St. Helena
2	1915	1915	Turner
2	1915	1917	Dundalk
2	1944	1949	Dundalk
3	1946	1949	Turner
4	1915	1915	Sollers
4	1946	1949	Sollers
4 A	1915	1915	Chesapeake Mills, Sparrows Point
4 A	1916	1922	Chesapeake Mills, Sparrows Point
4 B	1915	1922	
4 B	1942	1942	
5	1915	1915	
5	1930	1930	
6	1915	1915	
6	1930	1930	

Baltimore, Chesapeake & Atlantic

State sheet #	MD revised	correct to	Railroad Location
---------------	------------	------------	-------------------

PRRT&HS - State of Maryland Valuation Maps

VS# 1.02				9	1923	Royal Oak
1	1929	1934	Tilghmans Island	9	1948 1949	Royal Oak
2	1930	1934	Bellevue, Oxford, Double Mills, Corners	10	1915	
3	1929	1934	Cambridge, Oyser Shell Point, Travers	10	1935 1949	
4	1929	1934	Secretary, Wrights, Choptan	11	1928	
5	1928	1934	Kingston, Ganey's, Williston, Denton	11	1939 1949	Kirkham
6	1928	1934	Denton, Coveys, Easton Point	12	1915	
7	1928	1934	Bivalve, Tyaskin, Sandy Hill	12	1935 1949	
8	1928	1934	Athaloo, Vienna	13	1916	Bloomfield
9	1928	1934	Wingate Point	13	1948 1949	Bloomfield
10	1928	1934	Deals Island, Nanticoke, Dames Corner Wharf	14	1915	
11	1934	1934	Quantico, Salisbury	14	1939 1949	
12	1928	1934		15	1920	
13	1928	1934	Shelltown, Rehoboth, Powells	15	1939 1949	
14	1928	1934	Pocomoke City, Snow Hill	16	1958	
VS# 1 BC&A ML (MD)				16	1923	Easton
0	1915	1915		16	1948 1949	Easton
1		1920	Clairborne	17	1915	
1	1949	1949	Claiborne [B&E.v2.0]	17	1939 1949	
2		1934	McDaniels	18	1915	
2	1943	1949	McDaniels [B&E.v2.0]	18	1939 1949	
3		1915		19	1916	
3	1943	1949		19	1948 1949	
4		1915		20	1949 1949	
4	1935	1949		20	1952	
5		1915	St Michaels	21	1915	Tan Yard
5	1948	1949	St. Michaels [B&E.v2.0]	21	1949 1949	
6		1915		22	1915	
6	1935	1949		22	1949 1949	Bethlehem
7		1915		23	1915	
7	1935	1949		23	1949 1949	
8		1915		24	1915	
8	1943	1949		24	1949 1949	
8		1915		25	1949 1949	
8	1943	1949		25	1952	

PRRT&HS - State of Maryland Valuation Maps

26		1915	Preston	43	1945	1949	Vienna
26	1949	1949	Preston	44		1915	
27		1924	Linchester	44	1945	1949	
27	1939	1949	Linchester	45		1915	Coopers
28		1925	Ellwood	45	1945	1949	Coopers
28	1939	1949	Ellwood	46		1916	Mardella Springs
29		1915		46	1948	1949	Mardela Springs
29	1939	1949		47		1928	
30		1915		47	1935	1949	
30	1939	1949		48		1915	
31		1915		48	1935	1949	
31	1939	1949		49		1915	Darby
32		1915	Hurlock	49	1935	1949	Darby
32	1948	1949	Hurlock	50		1928	
33		1915		50	1935	1949	
33	1935	1949		51		1916	Hebron
34		1915	Ennalls	51	1943	1949	Hebron
34	1944	1949	Ennalls	52		1928	
35		1915		52	1935	1949	
35	1935	1949		53		1915	Rock-A-Walkin
36		1928		53	1941	1949	Rock-A-Walkin
36	1949	1949	Rhodesdale	54		1915	Puseys
37		1923	Brookview	54	1940	1949	Puseys
37	1935	1949	Brookview	55		1915	
38		1915		55	1946	1949	
38	1935	1949		56		1924	Byrds
39		1924	Reid's Grove	56	1949	1949	West Main St. (Byrds)
39	1942	1949	Reid's Grove	57		1915	Fulton
40		1924		57		1928	Salisbury
40	1935	1949		57	1949	1949	Salisbury
41		1915	Ralphs	57 A	1949	1949	Fulton
41	1938	1949	Ralphs	58		1915	Salisbury
42		1919	Vienna	58	1949	1949	Salisbury
42	1948	1949	Vienna	59		1915	
43		1915		59	1935	1949	

PRRT&HS - State of Maryland Valuation Maps

60		1928	Phillips
60	1945	1949	Phillip's
61		1915	
61	1935	1949	
62		1915	
62	1940	1949	
63		1928	Walston
63	1947	1949	Walston
64		1915	
64	1935	1949	
65		1915	Parsonsborg
65	1935	1949	Parsonsborg
66		1915	
66	1935	1949	
67		1915	Wimbrow's Siding
67	1935	1949	
68		1915	Pittsville
68	1947	1949	Pittsville
69		1915	
69	1935	1949	
70		1924	
70	1935	1949	
71		1928	Willard's
71	1940	1949	Willard's
72		1915	
72	1935	1949	
73		1915	
73	1935	1949	
74		1927	Whaleyville
74	1944	1949	Whaleyville
75		1915	
75	1935	1949	
76		1915	
76	1935	1949	
77		1915	St. Martins

77	1939	1949	St. Martins
78		1915	
78	1935	1949	
79		1915	
79	1935	1949	
80		1923	Berlin
80	1948	1949	Berlin
81		1915	
81	1935	1949	
82		1926	
82	1935	1949	
83		1915	
83	1935	1949	
84		1915	Holly Grove
84	1935	1949	Holly Grove
85		1915	
85	1935	1949	
86		1915	Synpuxent
86	1935	1949	Synepuxent
87		1916	Synepuxent Bay
87	1939	1949	
88		1922	Ocean City
88	1947	1949	Ocean City
88 A	1906	1906	
88 A	1948	1949	

Caton & Loudon Railway

State sheet #	MD revised	correct to	Railroad Location
VS# 1			
Caton & Loudon Railway			
1	1947	1948	Primrose, Beechfield
2	1947	1948	Cloud Cap, Kenwood
3	1947	1948	Paradise, State Assylum
4	1947	1948	Catonsville

Catonsville Short Line Railroad

State sheet #	MD revised	correct to	Railroad Location
---------------	------------	------------	-------------------

VS# 1.0	Catonsville Short Line		
1	1916	1916	Primrose, Beechfield
2	1906	1906	Cloud Cap, Kenwood
3	1947	1947	State Asylum, Paradise
4	1916	1923	Catonsville

16	1941	1949	HJ Interlocking
17	1917	1949	
18	1949	1949	
19	1941	1949	
19	1916	1950	

Cumberland Valley

Maryland & Delaware Telephone & Telegraph Co.

State	MD			
sheet #	revised	correct to	Railroad Location	

State	MD			
sheet #	revised	correct to	Railroad Location	

VS# 2.0 Cumberland Valley RR ML

VS#

1	1916	1916	Mason-Dixon
1	1941	1949	Mason-Dixon
2	1916	1916	
2	1941	1949	
3	1916	1927	Maugansville
3	1946	1949	Maugansville
4	1941	1949	
5	1916	1916	
5	1944	1949	
6	1945	1949	NC Tower
7	1916	1917	Hagerstown
7	1947	1949	Hagerstown
8	1921	1922	
8	1941	1949	
9	1939	1949	
10	1916	1916	Halfway
10	1943	1949	Halfway
11	1916	1916	
11	1941	1949	
12	1941	1949	
13	1916	1916	Williamsport
13	1941	1949	Williamsport
14	1925	1927	Potomac River Bridge
14	1941	1949	
15	1922	1922	HJ Interlocking
15	1941	1949	HJ Interlocking
16	1916	1916	HJ Interlocking

1918	1918		
------	------	--	--

Maryland, Delaware & Virginia

State	MD			
sheet #	revised	correct to	Railroad Location	

VS# 1 MD&V ML (MD)

1	1916	Love Point
2	1923	
3	1923	
4	1923	Stevensville
5	1923	
6	1923	Chester
7	1923	
8	1923	Narrows
9	1923	
9 A	1923	
10	1923	Grasonville
11	1923	Walsey
12	1923	
13	1923	
14	1923	Queenstown
14 A	1915	Queenstown Harbor
15	1923	
16	1923	Bloomingdale
17	1923	
18	1923	
19	1915	
20	1923	

PRRT&HS - State of Maryland Valuation Maps

21	1923	
22	1915	
23	1923	
24	1923	
25	1923	
26	1923	
27	1916	East Hillsboro
28	1923	
29	1923	Downes
30	1916	
31	1915	Tuckahoe
32	1923	
32 A	1915	
33	1915	
34	1915	Denton
35	1915	
36	1915	Hobbs
37	1915	
38	1915	
39	1915	
40	1915	Hickman
41	1923	
42	1923	Briston
43	1923	
44	1919	
45	1923	
46	1917	Centreville
VS# 1.03	MD&V Wharves and Docks in MD	
1	1915	1915 Baltimore Harbor
1	1930	1930
2	1925	1934 Kent Island
3	1915	1915
4	1915	1925
5	1927	1936
6	1931	1936

New York, Philadelphia & Norfolk			
State sheet #	MD revised	correct to	Railroad Location
VS# 1	ML & Branches (MD)		
1	1949	1949	
1		1952	
1		6/30	
1		6/30	
2		12/3	
2	1949	1949	
3		12/3	
3	1949	1949	
4	1949	1949	
5	1949	1949	
6		12/3	
6	1949	1949	Salisbury
7		12/3	
7	1949	1949	
8	1949	1949	
9		12/3	
9	1949	1949	
10		12/3	Fruitland
10	1949	1949	Fruitland
11	1949	1949	
12	1915	1915	
12	1949	1949	
13	1949	1949	Eden
14	1949	1949	
15	1949	1949	
16		12/3	Loretto
16	1949	1949	Loretto
17	1949	1949	
18	1949	1949	
19	1949	1949	
20	1949	1949	Princess Anne
21	1949	1949	

PRRT&HS - State of Maryland Valuation Maps

22		12/3	Kings Creek	40	1935	1949	
22	1949	1949	Kings Creek	41	1915	1915	
23		12/3		41	1935	1949	
23	1949	1949		42	1915	1925	
24	1949	1949		42	1935	1949	
25	1949	1949		43	1915	1918	Kingston
26	1949	1949		43	1945	1949	Kingston
27	1949	1949		44	1915	1915	
28		12/3	Costen	44	1935	1949	
28	1949	1949	Costen	45	1915	1927	
29		12/3		45	1935	1949	
29	1949	1949		46	1915	1927	
30	1915	1915		46	1935	1949	
30	1949	1949		47		12/3	Marion
31		12/3	Pocomoke	47	1915	1916	Marion
31	1949	1949	Poconoke	47	1948	1949	Marion
32	1915	1928		48	1915	1915	
32	1949	1949		48	1935	1949	
33	1915	1918		49	1915	1915	
33	1949	1949		49	1935	1949	
34	1915	1918		50	1915	1926	Hopewell
34	1949	1949		50	1935	1949	Hopewell
35	1915	1916	Beaver Dam	51	1915	1927	
35	1949	1949	Beaver Dam	51	1935	1949	
36		12/3		52	1915	1927	
36	1915	1922		52	1949	1949	
36	1949	1949		53		12/3	Crisfield
37	1915	1915	Kings Creek	53		12/3	
37	1937	1949	Kings Creek	53	1915	1915	Crisfield
37		6/30	Kings Creek	53	1949	1949	Crisfield
38	1915	1915		53 A	1917	1917	Crisfield
38	1935	1949		53 A	1918	1949	Crisfield
39	1915	1916	Westover	54 SL	1925	1942	
39	1945	1949	Westover				
40	1915	1921					

Philadelphia, Baltimore & Washington

State	MD
sheet #	revised correct to Railroad Location

PRRT&HS - State of Maryland Valuation Maps

VS# 4	PB&W ML (MD)			16	1947	1949	Principio
1	1918	1918	Iron Hill	17	1918	1927	
1	1947	1949	Iron Hill	17	1946	1949	
2	1918	1918		18	1947	1949	Perryville
2	1946	1949		18 A	1918	1927	Frenchtown
3	1918	1918		18 A	1946	1949	Frenchtown
3	1946	1949		19	1918	1921	Havre De Grace
3	1961	1962		19	1946	1949	Havre de Grace
4	1918	1918	Elkton	20	1918	1918	Havre De Grace
4 A	1948	1949		20	1949	1949	Havre de Grace
4 A	1955	1956		21	1918	1923	
5	1918	1918		21	1947	1949	
5	1946	1949		22	1918	1921	Swan Creek, Oakington
5 A	1946	1949		22	1947	1949	Oakington
6	1918	1918		22	1962	1962	Swan Creek, Oakington
6	1947	1949		23	1918	1921	Swan Creek
7	1918	1918	Bacon Hill	23	1946	1949	Swan Creek
7	1946	1949	Bacon Hill	24	1918	1927	Aberdeen
8	1918	1927		24	1947	1949	Aberdeen
8	1946	1949		25	1918	1925	
9	1923	1928		25	1949	1949	
9	1947	1949		26	1921	1923	Short Lane
10	1923	1923	North East	26	1947	1949	Short Lane
10	1947	1949	North East	27	1918	1927	
11	1918	1923		27	1947	1949	
11	1946	1949		28	1921	1923	Perryman
12	1918	1923		28	1947	1949	Perryman
12	1947	1949		29	1918	1923	
13	1922	1923	Charlestown	29	1947	1949	
13	1946	1949	Charlestown	30	1918	1927	
14	1918	1919		30	1947	1949	
14	1947	1949		31	1918	1927	Willoughby, Bush River
15	1918	1919		31	1946	1949	Otter Point, Bush River
15	1947	1949		32	1918	1922	
16	1918	1927	Principio	32	1944	1949	

PRRT&HS - State of Maryland Valuation Maps

33	1918	1922		48 A	1918	1949	
33	1945	1949		48 B	1918	1949	
33 A	1942	1949		48 C	1918	1949	
33 B	1929	1949		48 D	1918	1949	
34	1918	1922	Edgewood	48 E	1918	1949	
34	1944	1949	Edgewood	48 F	1918	1949	
35	1918	1918		49	1918	1922	
35	1945	1949		49	1949	1949	North Point Sub-Station
36	1918	1918	Magnolia	49 A	1949	1949	
36	1944	1949	Magnolia	49 A	1951	1955	
36	1962	1962	Magnolia	49 B	1918	1918	
37	1918	1925	Gunpowder	49			
37	1949	1949	Gunpowder	B1918r47			
38	1918	1918		50	1949	1949	
38	1943	1949		51	1918	1918	Bay View
39	1918	1918	Harewood Park	51	1948	1949	Bay View
39	1945	1949	Harewood Park	52	1918	1918	
40	1918	1918	Chase	52	1946	1949	
40	1945	1949	Chase Park	53	1949	1949	
41	1918	1918		54	1918	1918	
41	1941	1949		54	1918	1918	
42	1918	1918	Bengies	54	1949	1949	
42	1948	1949	Bengies	55	1918	1923	President Street
43	1918	1918		55	1946	1949	President Street
43	1944	1949		56	1918	1927	
44	1918	1918	Middle River	56	1949	1949	
44	1945	1949	Middle River	57	1918	1920	
45	1918	1918		57	1918	1920	
45	1948	1949		57	1949	1949	Lafayette
46	1918	1918	Stemmer's Run	57 A	1949	1949	
46	1946	1949	Stemmer's Run	57 B	1949	1949	
47	1918	1918		57 B	1949	1957	
47	1949	1949		57 C	1946	1949	
48	1918	1918	Back River, Chesaco Park	57 D	1943	1949	
48	1949	1949	Chesaco Park	58	1918	1918	Edmondson
				58	1949	1949	Gwynn's Run, Edmondson

PRRT&HS - State of Maryland Valuation Maps

59	1918	1918	Frederick Road	75	1944	1949	
59	1949	1949	Frederick Road	76	1918	1918	Patuxent
60	1918	1920	Loudon Park	76	1944	1949	Patuxent
60	1947	1949	Loudon Park	77	1918	1919	
61	1918	1924		77	1944	1949	
61	1946	1949		78	1918	1923	Arundel
61	1953	1955		78	1944	1949	Arundel
62	1918	1921	Arbutus	78 A	1944	1949	
62	1947	1949	Halethorpe, Arbutus,	78 B	1946	1949	
63	1918	1918	Winans	79	1918	1927	Jericho Park
63	1941	1949	Winans	79	1941	1949	Jericho Park
64	1918	1918	Patapsco	80	1918	1927	Bowie
64	1944	1949	Patapsco	80	1949	1949	Bowie
65	1918	1918		81	1943	1949	Springfield
65	1949	1949		82	1943	1949	Glendale
66	1918	1918	Stony Run	83	1944	1949	
66	1944	1949	Stoney Run	84	1943	1949	Seabrook
67	1918	1918		85	1949	1949	Lanham
67	1948	1949		86	1941	1949	
68	1918	1927	Harman	87	1941	1949	Ardwick
68	1944	1949	Harman	88	1918	1949	Landover
69	1918	1927	Severn	89	1918	1949	
69	1949	1949	Severn	90	1918	1949	Cheverly (Tuxedo)
70	1918	1918		90	1918	1949	Cheverly (Tuxedo)
70	1949	1949		91	1918	1949	
71	1918	1918		92	1918	1949	Principio
71	1943	1949		93	1918	1949	
72	1918	1918	Jackson's Grove	94	1918	1949	Perryville
72	1944	1949	Jackson's Grove	95	1918	1949	
73	1918	1918	Odenton	96	1918	1949	
73	1948	1949	Odenton	97	1918	1949	
73 A	1947	1949		98	1918	1949	
74	1918	1918		99	1918	1949	
74	1944	1949		100	1918	1948	
75	1918	1918		101	1918	1948	Cheverly

102 1918 1948

102 1962 1962

VS# 4.25 PB&W Camp Meade Branch

1 1918 1949

2 1918 1949

Union Railroad of Baltimore

State sheet #	MD revised	correct to	Railroad Location
---------------	------------	------------	-------------------

VS# 1 Union Railroad of Baltimore

1 SL 1918 1920

VS# 1A Union Railroad of Baltimore

1 1918 1918

1 SL 1947 1948

1 ST 1918 1918

2 1918 1918

2 1948 1948 Biddle Street

3 1918 1919

3 1946 1948

4 1918 1922 Bay View

4 1947 1948 Bay View

VS# 1b Union Railroad of Baltimore

1 1918 1918 Orangeville, Highlandtown

1 1948 1948 Orange, Highlandtown

2 1918 1918

2 1948 1948 Highlandtown

3 1918 1920

3 1947 1948

3 A 1918 1918

3 A 1948 1948

VS# 1c Union Railroad of Baltimore

1 1918 1918

1 1947 1948

2 1947 1948 Colgate Creek

2 1955 1958 Colgate Creek

Chesapeake & Curtis Bay Railroad Co.

Philadelphia, Baltimore & Washington

State sheet #	MD revised	correct to	Railroad Location
---------------	------------	------------	-------------------

VS# 17.0 C&CB (joint PB&W, WM)

1 1919 1919

1 1932 1932

Columbia & Port Deposit

Philadelphia, Baltimore & Washington

State sheet #	MD revised	correct to	Railroad Location
---------------	------------	------------	-------------------

VS# 8.0

1 1946 1949 Frazer's Point Tunnel, Wild Cat Point Tunnel

2 1946 1949 Bald Friar

3 1946 1949 Pilot

4 1946 1949

5 1946 1949 Conowingo

6 1946 1949

7 1946 1949

8 1946 1949

9 1946 1949 Rock (Canal)

10 1946 1949

11 1949 1949 Port Deposit, Tome Institute

12 1946 1949

13 1946 1949

14 1946 1949 Frenchtown

VS# 8.01

1 1946 1949 Frenchtown

2 1946 1949

VS# 2 Columbia & Port Deposit

3 1938 1962 Washington Boro

Delaware, Maryland & Virginia

Philadelphia, Baltimore & Washington

State sheet #	MD revised	correct to	Railroad Location
---------------	------------	------------	-------------------

VS# 2 Delaware Maryland & Virginia ML (MD)

1 1918 1918

1 1935 1949

2 1943 1949 Bishop

PRRT&HS - State of Maryland Valuation Maps

3	1935	1949	
4	1935	1949	Showell
5	1935	1949	
6	1936	1949	Friendship
7	1935	1949	
8	1939	1949	
9	1918	1922	Berlin
9	1941	1949	Berlin
10	1918	1922	
10	1918	1922	
10	1938	1949	
11	1935	1949	
12	1918	1928	Ironshire
12	1936	1949	Ironshire
13	1935	1949	
14	1935	1949	
15	1918	1922	
15	1935	1949	
16	1918	1922	Queponco
16	1935	1949	Queponco
17	1935	1949	
18	1935	1949	
19	1935	1949	
20	1918	1918	Wesley
20	1919	1928	Wesley
20	1943	1949	Wesley
21	1918	1918	
21	1935	1949	
22	1918	1920	
22	1935	1949	
23	1918	1919	Snow Hill
23	1920	1920	Snow Hill
23	1921	1922	Snow Hill
23	1921	1922	Snow Hill
23	1927	1928	Snow Hill

23	1939	1949	Snow Hill
23 A	1946	1949	
24	1935	1949	
25	1935	1949	
26	1935	1949	Scarboro
27	1918	1949	
28	1935	1949	
29	1939	1949	Girdletree
29	1955	1955	Girdletree
30	1935	1949	
31	1939	1949	Hursley
32	1935	1949	
33	1935	1949	
34	1935	1949	
35	1918	1918	Greenbackville
35	1918	1918	Greenbackville
35	1949	1949	Greenbackville

Delaware Railroad

Philadelphia, Baltimore & Washington

State sheet #	MD revised	correct to	Railroad Location
VS# 2			
Delaware RR Branches (MD) (PB&W)			
1		1927	Golt
1	1943	1949	Golt
2	1935	1949	
3	1935	1949	
4		1920	
4		1949	
4	1940	1949	
5		1927	Massey
5	1949	1949	Massey
6	1935	1949	
7	1935	1949	
8		1927	Millington
8	1949	1949	Millington
9	1940	1949	

PRRT&HS - State of Maryland Valuation Maps

10	1939	1949		35	1932	1949	
11		1920		36		1928	Black
11	1935	1949		36	1932	1949	Black
12	1935	1949		37	1932	1949	
13		1923	Sudlersville	38		1924	
13	1935	1949	Sudlersville	38	1932	1949	
14	1935	1949		39		1924	
15	1935	1949		39	1932	1949	
16	1939	1949	Barclay	40		1920	Kennedyville
16		1950	Barclay	40	1932	1949	Kennedyville Chestertown Branch
17	1935	1949		41		1926	
18	1935	1949		41	1932	1949	
19	1935	1949		41	1949	1949	Chestertown
20		1927	Roberts	42	1932	1949	Still Pond
20	1944	1949	Roberts	43	1932	1949	
21	1935	1949		44	1932	1949	
22		1922	Price	45	1932	1949	
22	1936	1949	Price	46		1924	Worton
23	1935	1949		46	1938	1949	Worton
24		1927	Hayden	47	1932	1949	
24	1935	1949	Hayden	48		1918	
25	1935	1949		48	1932	1949	
26	1935	1949		49		1918	
27	1935	1949	Carville	49	1932	1949	
28	1935	1949		50		1923	
29	1935	1949		50	1946	1949	
30		1920	Centreville	51		1920	Chestertown
30	1932	1949	Massey	VS# 3	Delaware RR Branches (MD) (PB&W)		
30	1949	1949	Centreville				
31		1927	Massey	1		1925	Marydel
32	1932	1949		1	1932	1949	Marydel
33		1926		2	1932	1949	
33	1932	1949		3	1932	1949	Henderson
34		1928	Lambson	4		1925	
34	1932	1949	Lambson	4	1932	1949	

PRRT&HS - State of Maryland Valuation Maps

5	1932	1949		32	1943	1949	
6		1928	Goldsboro	33	1943	1949	
6	1932	1949	Goldsboro	34	1943	1949	
7	1932	1949		35	1943	1949	Llandaff
8	1932	1949		36	1943	1949	
9		1919		37	1943	1949	Trappe
9	1932	1949		38	1943	1949	
10		1919		39	1943	1949	
10	1932	1949		40	1943	1949	
11	1932	1949	Greensboro	41		1920	Oxford
12	1932	1949		41	1943	1949	Oxford
13	1932	1949		42	1943	1949	
14	1932	1949		43	1943	1949	
15		1925	Ridgely	44	1943	1949	
15	1932	1949		45	1943	1949	
16	1932	1949		46		1926	Federalsburg
17	1932	1949		46	1943	1949	
18	1932	1949		47	1943	1949	
19		1922	Queen Anne	48	1943	1949	
19	1932	1949	Queen Anne	49	1943	1949	Williamsburg
20	1932	1949		50		1924	
21		1927		50	1943	1949	
21	1932	1949		51	1943	1949	
22	1932	1949		52		1924	Hurlock
23	1932	1949	Cordova	52	1943	1949	
24	1932	1949		53	1943	1949	
25	1932	1949		54	1943	1949	
26	1932	1949	Chapel	55	1943	1949	
27	1932	1949		56		1923	East New Market
28	1932	1949		56	1943	1949	East New Market
29	1943	1949		57	1943	1949	
30	1943	1949		58	1943	1949	
31		1919	Easton	59	1943	1949	
31	1943	1949	Easton	60		1928	Linkwood
32		1928	Easton	60	1943	1949	Linkwood

61		1927	
61	1943	1949	
62	1943	1949	
63		1928	Airey
63	1943	1949	Airey
64	1943	1949	
65		1921	Thompson
65	1943	1949	Thompson
66	1943	1949	
67	1943	1949	
68		1923	
68	1943	1949	
69		1924	Cambridge
69	1943	1949	Cambridge

4	1915	1915	Liberty Grove
5	1915	1915	Liberty Grove
6	1915	1915	Colora
7	1915	1915	
8	1915	1915	Liberty Grove
9	1915	1915	Rowlandville
10	1915	1915	Octoraro
10 A	1915	1915	

VS# 12 PA/MD State Line to Octoraro (PB&W/P&BC)

1	1946	1949	Sylmar
2	1946	1949	
3	1948	1949	Rising Sun
4	1946	1949	
5	1946	1949	
6	1946	1949	Colora (Bainbridge)
7	1946	1949	
8	1946	1949	Liberty Grove
9	1946	1949	Rowlandville
10	1946	1949	Octoraro
10 A	1946	1949	

Elkton & Middletown Railroad Company of Cecil County

Philadelphia, Baltimore & Washington

State sheet #	MD revised	correct to	Railroad Location
---------------	------------	------------	-------------------

VS# 4.14 Elkton & Middletown Railroad of Cecil County

1		1948	Elkton
2		1948	
3		1948	
4		1948	
5		1948	
6		1948	
7		1948	
8		1948	
9		1948	

Philadelphia & Baltimore Central

Philadelphia, Baltimore & Washington

State sheet #	MD revised	correct to	Railroad Location
---------------	------------	------------	-------------------

VS# 3 Media Div ML & Branches in MD (PB&W/P&BC)

1	1915	1915	Sylmar
2	1915	1915	
3	1915	1915	Liberty Grove

Northern Central Pennsylvania Railroad

State sheet #	MD revised	correct to	Railroad Location
---------------	------------	------------	-------------------

VS# 1a

3			?
---	--	--	---

VS# 1b

1		1918	
1	1948	1948	
2		1918	Jacksons Wharf
2	1948	1948	President Street
2 ST	1945	1948	
3	1947	1948	
3 A		1916	

VS# 1C

1 SL	1947	1948	
------	------	------	--

PRRT&HS - State of Maryland Valuation Maps

1 ST	1948	1948	Union Station	18	1946	1948	Phoenix
1 SL SL		1918		19		1921	
2 SL	1942	1948		19	1941	1948	
2 SL SL		1922		20		1920	Sparks
3		1921		20	1941	1948	Sparks
3	1942	1948		21		1919	Glencoe
4		1922	Woodberry	21	1941	1948	Glencoe
4	1945	1948	Woodbury	22		1926	
VS# 1	Northern Central ML (MD)			22	1941	1948	
1	1918	1948		23		1926	Monkton
5		1922	Melvale	23	1941	1948	Corbett, Monkton
5	1945	1948	Melvale	24	1947	1948	Monkton
6		1919	Cylburn	25		1919	
6	1946	1948	Clyburn, Mt. Washington	25	1941	1948	
7		1918	Bare Hills	26	1946	1948	Blue Mount
7	1946	1948	Mt. Washington, Bare Hills	27		1922	
8		1920	Brightside	27	1946	1948	White Hall
8	1946	1948	Hollins, Brightside, Lake	28	1942	1948	Graystone
9	1946	1948	Ruxton	29		1926	Parkton
10	1941	1948	Riderwood	29	1948	1948	Parkton
11		1924	Lutherville	30		1926	Parkton
11	1941	1948	Lutherville	30	1942	1948	Parkton
12		1927	Timonium	31		1925	Walker
12	1946	1948	Timonium	31	1942	1948	Walker
13		1925	Padonia	32		1926	Bentley
13	1946	1948	Padonia	32	1942	1948	Bentley
14		1918	Texas	33	1942	1948	
14	1943	1948	Texas	34	1942	1948	
15		1921	Cockeysville	35		1925	Freeland
15	1948	1948	Cockeysville	35	1947	1948	Freeland
16		1921	Ashland	36		1924	PA State Line
16	1948	1948	Ashland	36	1941	1948	
17		1921		37		1927	Hollins, Sorrento
17	1932	1948		37	1941	1948	Hollins
18		1922	Phoenix	38	1941	1948	

PRRT&HS - State of Maryland Valuation Maps

39	1946	1948	Rockland
40		1921	Brooklandville
40	1942	1948	Brooklandville
41		1927	Rogers, Lystra
41	1946	1948	Lystra
42	1946	1948	Stevenson
43	1942	1948	Eccleston
44		1922	Chattolanee, Garrison Forest
44	1941	1948	Chattolanee, Garrison Forest
45		1918	Green Spring Junction
45	1946	1948	Turnpike, Green Spring Jct.

VS# 1a Northern Central ML (MD)

2		1923	
2	1946	1948	Biddle Street
3	1948	1948	
3 A	1948	1948	
5		1918	Highlandtown, Orangeville
5	1948	1948	Orangeville, Highlandtown
6	1947	1948	
7		1918	
7		1919	
7	1947	1948	
8	1947	1948	
9		1917	
9	1942	1948	

Pennsylvania Railroad

State	MD		
sheet #	revised	correct to	Railroad Location

VS# 1

0		6/30	
---	--	------	--

Union Railroad of Baltimore

Pennsylvania Railroad

State	MD		
sheet #	revised	correct to	Railroad Location

VS# 1B

2		1921	Highlandtown
---	--	------	--------------

York, Hanover & Frederick

Pennsylvania Railroad

State	MD		
sheet #	revised	correct to	Railroad Location

VS# 2 York, Hanover & Fredricktown ML (MD)

1		1918	
2		1928	Piney Creek
5		1927	
6		1927	Taneytown
9		1924	
11		1923	Keymar
11	1927	1927	Keymar
12		1927	
15		1927	New Midway
16		1927	New Midway
18		1927	Woodsboro
20		1925	McAler
20	1927	1927	McAler
22		1924	Walkersville
23		1927	Fountain Rock
25		1927	
28		1925	Frederick
28	1951	1952	Frederick
33	1927	1927	

VS# 2.0 Union Bridge Branch (YH&D)

33		1926	
34		1926	Union Bridge