



Pennsylvania Railroad Technical & Historical Society
Lewistown Archives

ICC Valuation Map Index
State of Delaware

PRRT&HS map reproduction prices as of February 2016:
\$6.00 each

Maps are available as downloadable image files (jpg or pdf) or as printed maps. Orders for printed maps will take longer to complete and a shipping & handling fee will be added. The Lewistown Archives is open 1 week a month and manned by volunteers.

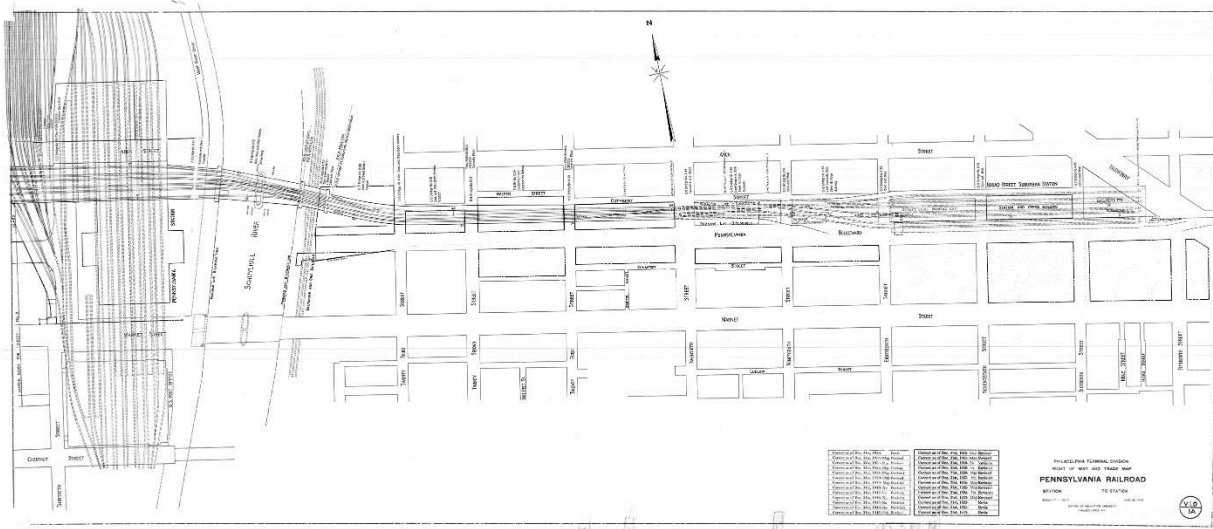
This pdf can be searched for railroad names and locations using the PDF Find command under the Acrobat Reader Edit Menu or press (ctrl or cmd "F"). Holding down the shift key opens the Advanced Search window instead.

Original valuation maps are approximately 24" x 56" and usually cover 1 mile of railroad right of way (1" = 100'). Most were first drawn between 1915 and 1918. Last revision and "correct to" dates are shown when indicated on the map sheet.

Valuation section numbers change at the division or state line. Division names are usually from the time of the map's creation. Branches have subsection numbers or are included in regular sheet numbering. The index is sorted by railroad owner/operator and then by railroad name, state and valuation number at the time of creation. In some cases, this information was revised, changed or additional sheets added at a later date.

Property lines are included on most sheets, unless a separate land sheet was issued – usually designated by an "L" or "SL" in the sheet number. Schedules of property are often redacted from revisions after about 1930.

Pennsylvania Railroad Valuation Section 1 Sheet 1A –Broad Street Suburban & 30th St. Stations 1954



Partial support for this index provided by a grant from the R&LHS

Produced by Stephen Titchenal, www.railsandtrails.com for the PRRT&HS

Baltimore, Chesapeake & Atlantic

State	DE			
sheet #	revised	correct to	Railroad Location	

VS# 2.01	BC&A Wharves & Docks in DE			
1	1927		Seaford	

Delaware Water Company

State	DE			
sheet #	revised	correct to	Railroad Location	

VS# 1	Delaware Water Company			
1	1929	1929		
2	1929	1929		

Maryland & Delaware Telephone & Telegraph

State	MD			
sheet #	revised	correct to	Railroad Location	

VS#				
	1918	1918		

Maryland, Delaware & Virginia

State	DE			
sheet #	revised	correct to	Railroad Location	

VS# 2	MD&V ML (DE)			
1	1915		Hickman	
2	1915			
3	1915		Adamsville	
4	1915			
5	1915		Blanchard	
6	1915			
7	1915			
8	1915		Greenwood	
9	1918			
10	1915			
11	1915			
12	1915		Owens	
13	1915			
14	1915		Oakley	
15	1915			
16	1915			
24	1915		Milton	
27	1915			
28	1915		Whitesboro	
29	1915		Overbrook	
30	1915			
31	1915			
32	1915			
33	1915		Lewes	

34	1922		Delaware Bay	
34 A	1922			

Philadelphia, Baltimore & Washington

State	DE			
sheet #	revised	correct to	Railroad Location	

VS# 3	PB&W ML (DE)			
1	1918	1918		
1	1947	1949	Naaman	
1 A	1919	1919	Claymont	
1 A	1919	1919	Claymont	
2	1918	1918	Claymont	
2	1947	1949	Claymont	
3 SL	1918	1918		
3 SL	1948	1949	Binstead, Holly Oak	
3 ST	1947	1949	Binstead, Holly Oak	
4 SL	1918	1918		
4 SL	1946	1949	Bellevue	
4 ST	1918	1918	Bellevue	
4 ST	1948	1949	Bellevue	
5 SL	1918	1918		
5 SL	1947	1949		
5 ST	1918	1918		
5 ST	1947	1949	Bellevue Substation	
6	1918	1918		
6 SL	1949	1949		
6 ST	1918	1918	Edge Moor	
6 ST	1947	1948	Edge Moor	
6 ST	1947	1949	Edge Moor	
7	1949	1949	Bellevue	
8	1918	1918	'HA' Tower	
8	1918	1918	'HA' Tower	
8	1991	1991		
9 A	1918	1918	Wilmington	
9 A	1947	1949	Wilmington	
9 B	1918	1919		
9 B	1947	1949		
10 SL	1918	1918		
10 SL	1946	1949		
10 ST	1918	1918	West Yard	
10 ST	1947	1948	West Yard	
10 ST	1947	1949	West Yard Sub-station	
11	1918	1926		
11	1947	1949		
11	1963	1963		
11	1962	1964		
12	1918	1927		

PRRT&HS - State of Delaware Valuation Maps

12	1947	1949	
13	1918	1921	Newport
13	1949	1949	Newport
14	1918	1927	
14	1941	1949	
15	1921	1927	Stanton
15	1948	1949	Stanton
16	1918	1927	
16	1947	1949	
17	1918	1923	
17	1947	1949	
18	1918	1927	Ruthby
18	1947	1949	Ruthby
19	1918	1923	
19	1947	1949	
20	1948	1949	
21	1918	1918	Newark
21	1949	1949	Newark
22	1918	1918	
22	1947	1949	
23	1918	1918	
23	1947	1949	
24	1918	1918	
24	1945	1949	
25	1918	1919	
25	1947	1949	Vandever
26	1918	1919	
26	1947	1949	
27	1918	1925	
27	1947	1949	
28	1949	1949	
29	1919	1927	
29	1947	1949	West Yard Sub-Station
30	1918	1926	
30	1947	1949	
31	1918	1921	
31	1947	1949	WARD Tower
32	1918	1919	
32	1949	1949	
33	1918	1919	
33	1949	1949	
34	1949	1949	
34 A	1949	1949	
35	1947	1949	Edge Moor
36	1918	1918	
36	1947	1949	
37	1918	1926	Edge Moor

37	1948	1949	Edge Moor
38	1918	1927	Wilson
38	1947	1949	Wilson
39	1947	1949	
39	1947	1955	
40	1918	1919	Cooch
40	1947	1949	Cooch
41	1918	1921	Keeney
41	1947	1949	Keeney
42	1918	1927	
42	1947	1949	Glasgow
43	1918	1927	
43	1947	1949	
44	1918	1927	Porter
44	1947	1949	Porter
45	1918	1927	Corbit
45	1947	1949	Corbit
46	1947	1949	
47	1918	1927	
47	1947	1949	Reybold
48	1918	1927	
48	1947	1949	
49	1918	1923	Delaware City
49	1947	1949	Delaware City

VS# 3.11 Claymont Branch (PB&W DE)

1	1918	1918	
1	1946	1949	

VS# 15.0 Pomeroy Branch (PB&W)

1	1918	1918	Thompson's
2	1918	1925	
3	1918	1918	Tweed
4	1929	1940	
5	1918	1920	Newark Centre
6	1918	1918	Pencader

Delaware, Maryland & Virginia

Philadelphia, Baltimore & Washington

State	DE		
sheet #	revised	correct to	Railroad Location

VS# 1 Delaware Maryland & Virginia ML (DE)

1	1918	1918	Harrington
1	1934	1934	Harrington
1	1949	1949	Harrington
1	1949	1962	Harrington
2	1918	1949	
3	1918	1949	

PRRT&HS - State of Delaware Valuation Maps

4	1947	1949		34	1920	1921	
5	1918	1928	Houston	34	1922	1949	
5	1938	1949	Houston	35	1935	1949	
6	1935	1949		36	1945	1949	
7	1935	1949		37	1918	1928	Dagsboro
8	1918	1919		37	1945	1949	Dagsboro
8	1935	1949		38	1918	1918	
9	1918	1922	Milford	38	1935	1949	
9	1947	1949	Milford	39	1949	1949	Frankford
9	1960	1962	Milford	39	1949	1949	Frankford
10	1947	1949		40	1935	1949	
11	1948	1949		41	1935	1949	
12	1918	1927	Lincoln City	42	1935	1949	
12	1939	1949	Lincoln City	43	1918	1926	Selbyville
13	1947	1949		43	1918	1926	Selbyville
14	1919	1928	Ellendale	43	1927	1928	Selbyville
14	1935	1949		43	1948	1949	Selbyville
15	1935	1949		44	1935	1949	
16	1918	1918	Ellendale	45	1935	1949	Georgetown
16	1946	1949	Ellendale	46	1935	1949	
17	1935	1949		47	1935	1949	Messick
18	1935	1949		48	1935	1949	
19	1918	1928	Robins	49	1945	1949	Bennum
19	1939	1949	Robbins	50	1948	1949	Broadkill
20	1918	1918	Redden	51	1935	1949	
20	1943	1949	Redden	52	1918	1921	Cool Springs
21	1918	1926	Redden	52	1946	1949	Cool Spring
21	1935	1949	Redden	53	1948	1949	
22	1944	1949		54	1935	1949	
23	1944	1949		55	1935	1949	
24	1918	1920	Georgetown	56	1918	1925	Nassau
24	1918	1920	Georgetown	56	1947	1949	Nassau
24	1927	1927	Georgetown	57	1935	1949	
24	1948	1949	Georgetown	58	1935	1949	
24	1947	1949	Georgetown	59	1918	1922	Lewes
25	1918	1919	Georgetown	59	1927	1927	Lewes
25	1947	1949	Georgetown	59	1943	1949	
26	1935	1949		59 A	1918	1921	
27	1935	1949		59 A	1943	1949	
28	1935	1949		59 B	1918	1921	
29	1940	1949	Stockley	59 B	1927	1928	
30	1935	1949		59 B	1941	1949	
31	1935	1949		59 C	1918	1922	
32	1935	1949		59 C	1948	1949	
33	1920	1921	Millsboro	60	1918	1922	
33	1949	1949	Millsboro	60	1935	1949	
34	1918	1919		61	1935	1949	

PRRT&HS - State of Delaware Valuation Maps

62	1935	1949	
63	1946	1949	
64	1918	1919	Reheboth
64	1925	1925	Rehoboth
64	1949	1949	Rehoboth
VS# 1.11 Delaware Maryland & Virginia ML (DE)			
1	1918	1949	Ellendale
2	1918	1949	Ellendale
3	1918	1949	
4	1918	1949	
5	1918	1949	
6	1918	1949	
7	1918	1949	
8	1949	1949	Milton
9	1918	1949	
10	1918	1949	

Delaware Railroad

Philadelphia, Baltimore & Washington

State sheet #	DE revised	correct to	Railroad Location
---------------	------------	------------	-------------------

VS# 1 Delaware RR (DE) (PB&W)			
1		1918	
1	1918	1918	
1	1947	1949	
2		1921	
2	1920	1921	Farnhurst
2	1923	1928	Farnhurst
2	1948	1948	Farnhurst
2	1948	1949	Farnhurst
3		1924	
3	1918	1924	
3	1947	1948	
3	1947	1949	
4		1924	
4	1918	1924	
4	1947	1949	
5		1920	New Castle
5	1918	1920	
5	1949	1949	
5	1949	1949	New Castle
5 A		1925	
5 A	1918	1925	
5 A	1947	1949	
6		1942	
6	1940	1942	

6	1947	1949	
7		1922	State Road
7	1947	1949	State Road
7 A		1928	
7 A	1947	1949	
8		1922	
8	1947	1949	
9	1947	1949	
10		1925	Bear
10	1947	1949	Bear
11		1929	
11	1947	1949	
12		1928	
12	1947	1949	
13		1918	Porter
13	1947	1948	
13	1947	1949	Porter
14		1928	
14	1947	1949	
15	1918	1919	Kirkwood
15		1929	Kirkwood
15	1947	1949	Kirkwood
16		1926	Canal
16	1947	1949	Canal
17	1947	1949	
18		1927	
18	1947	1949	
19		1920	Mt. Pleasant
19	1947	1949	Mt. Pleasant
20	1935	1949	
21		1928	Armstrong
21	1947	1949	Armstrong
22	1935	1949	
23		1923	Middletown
23	1949	1949	Middletown
24		1918	
24	1937	1949	
25	1935	1949	
26		1949	
26	1943	1949	
27		1920	Townsend
27	1947	1949	Townsend
28		1929	
28	1947	1949	
29		1919	
29	1944	1949	
30		1920	Blackbird

PRRT&HS - State of Delaware Valuation Maps

30	1918	1928	Blackbird	57	1948	1949	Felton
30	1944	1949	Blackbird	58	1943	1949	
31	1935	1949		59	1943	1949	
32	1935	1949		60	1935	1949	
33		1928	Greenspring	61	1935	1949	
33	1944	1949	Greespring	62		1927	
34		1922		62	1949	1949	
34	1935	1949		63		1919	Harrington
35		1919	Clayton	63	1935	1949	Harrington
35	1943	1944	Clayton	64	1948	1949	
35	1949	1949	Clayton	65	1948	1949	
35	1948	1949		66		1924	
35 A		1927		66	1949	1949	Farmington
36		1927		67	1940	1949	Farmington
36	1943	1949	Blackbird	68	1947	1949	
37	1943	1949		69	1935	1949	
38		1927		70	1946	1949	
38	1943	1949	Brenford	71		1924	Greenwood
39	1935	1949		71	1949	1949	Greenwood
40		1920		72	1936	1949	
40	1935	1949		73	1935	1949	
41		1921	Cheswold	74	1948	1949	
41	1949	1949	Cheswold	75		1927	Bridgeville
42	1935	1949		75	1945	1949	Bridgeville
43	1947	1949	Dupont	76		1920	
44	1935	1949	College Crossing	76	1949	1950	
45		1927		77		1926	
45	1948	1949		77	1947	1949	
46		1922	Dover	78		1927	Cannon
46	1949	1949	Dover	78	1949	1949	Cannon
47	1947	1949		79		1927	
47		1952		79	1935	1949	
48	1941	1949		80	1918	1949	
49		1924	Wyoming	81		1927	Ross
49	1948	1949	Wyoming	81	1944	1949	Ross
50		1928		82		1919	
50	1947	1949		82	1949	1949	
51		1920		83		1926	Seaford
51	1936	1949		83	1949	1949	Seaford
52	1947	1949		84		1927	
53		1921	Woodside	84	1935	1949	
53	1943	1949	Woodside	85		1927	
54	1940	1949	Viola	85	1939	1949	
55		1927		86		1927	
55	1940	1949		86	1939	1949	
56	1935	1949		87		1927	Broad Creek
57		1921	Felton	87	1939	1949	Broad Creek

PRRT&HS - State of Delaware Valuation Maps

88	1935	1949	
89		1920	Laurel
89	1948	1949	Laurel
90		1925	
90	1935	1949	
91	1935	1949	
92		1927	Bacon
92	1939	1949	Bacon
93	1935	1949	
94		1918	
94	1949	1949	
95	1927	1928	
95	1949	1949	
96	1918	1918	Delmar
96	1918	1924	Delmar
96	1949	1949	Delmar
96	1949	1949	Delmar
97		1919	New Castle
97	1947	1949	New Castle
98		1926	
98	1947	1949	
99		1925	
99	1947	1949	
100		1927	
100	1947	1949	
101		1927	
101	1947	1949	
102		1921	
102	1947	1949	
103		1929	Townsend
103	1947	1949	Townsend
104	1935	1949	
105	1935	1949	
106	1935	1949	Vandyke
107	1935	1949	
108	1918	1949	
109		1926	Clayton
109	1949	1950	Clayton
110		1921	Smyrna
110	1935	1949	Smyrna
111	1935	1949	Clayton
112	1935	1949	
113	1935	1949	
114	1935	1949	
115		1923	Kenton
115	1940	1949	Kenton
116		1927	

116	1935	1949	
117		1919	
117	1935	1949	
118		1927	
118	1935	1949	
119	1935	1949	
120	1939	1949	Hartly
121	1946	1949	Slaughter
122	1935	1949	
123	1935	1949	
124	1935	1949	
125	1946	1949	Seaford
125		1950	Seaford
126	1946	1949	
127	1944	1949	
128	1936	1949	
129	1935	1949	
130		1927	Oak Grove
130	1935	1949	Oak Grove

Pomeroy and Newark Railroad Company

Pennsylvania Railroad

State	DE			
sheet #	revised	correct to	Railroad Location	

VS# 2 Pomeroy Branch (PB&W)

1	1945	1949	
2	1945	1949	
3	1941	1949	Tweed
4	1947	1949	
5	1949	1949	Newark Centre
6	1949	1949	Pencader